

Introducing

THE POLY2UBE!

2-piece Tubular Polymer Cement Form

FEATURES:

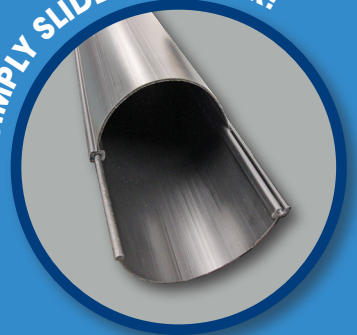
- Our exclusive Encapsulated Slide Lock (ESL) Technology
- Easy assembly... simply slide one piece into the other and you're ready to fill
- No seam blowout when filling with concrete due to the ESL seam technology
- Walls are 15% thicker than our previous model
- At 4.7" in diameter, these robust tubes hold 40% more concrete
- Made from a blend of Polyethylene and TVP materials specifically designed to meet Imperial Pools strength requirements for improved overall support
- In stock and ready to ship! Space-saving design also allows the pieces to nest within each other making them very easy to ship. No more gaylords of cardboard Sonotubes or plastic pipes
- Manufactured to comfortably attached to our polymer braces, the Poly2ube will be a welcomed improvement to your installs and deck support systems
- Available in both 42" (#86151) and 48" panels (#86152)

For more
information,
contact your
local branch or
Imperial Pools
Rep!

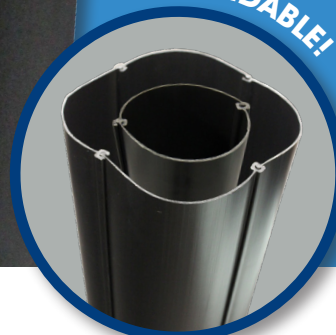
ESL TECHNOLOGY!



SIMPLY SLIDE TOGETHER!



EXPANDABLE!



Imperial
POOLS INC.[®]

REDEFINING ONE SOURCE

33 Wade Road
Latham, NY 12110
1-800-444-9977

www.imperialpools.com