

LOOP-LOC[®]

THE ONE. THE ONLY.

Schedule of Retail Prices Effective May 15, 2021

Trusted Protection
for Over 40 Years



LOOP-LOC[®]
THE ONE. THE ONLY.

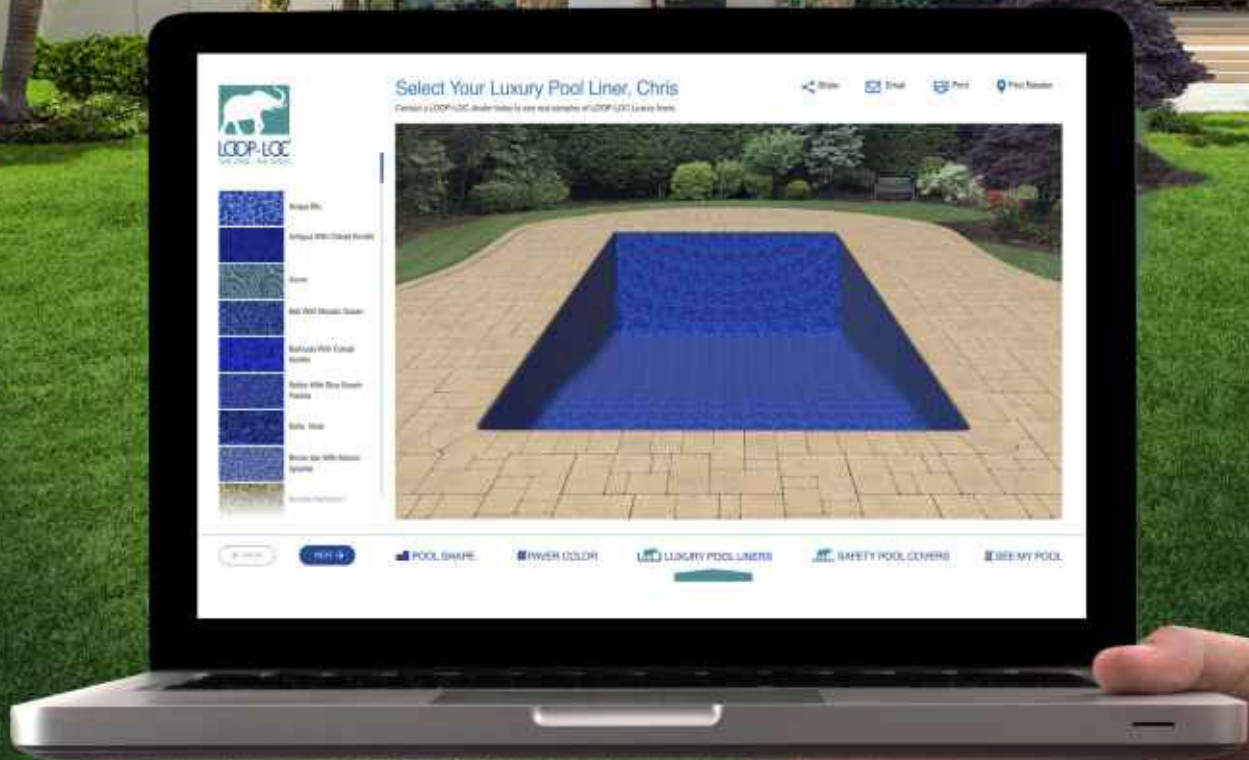


Manual Safety Cover
In Accordance with
ASTM Standard F 1346-91



© LOOP-LOC 2021. Made in the USA.

Meet Mirage®



Introducing Mirage™ Pool Visualizer

Exclusively from LOOP-LOC®

Now you can see how any Loop-Loc Luxury Liner or pool cover will look on your pool with our new, online pool visualizer. Choose your pool shape, paver color, liner pattern or cover color. Try as many variations as you like. You can even share the images on social media. Simply go to LoopLoc.com/Mirage.

For more information, visit looploc.com or call 1-800-LOC-LOOP.



© LOOP-LOC 2021. Made in the USA.



LOOP-LOC®
THE ONE. THE ONLY.

TABLE OF CONTENTS:

Super Dense Green Mesh Stock In-Ground Sizes	Page 4-7
*NEW Designer Color Mesh Stock In-Ground Sizes	Page 8
*NEW Designer Color ULTRA-LOC III Solid Stock In-Ground Sizes	Page 9
ULTRA-LOC III Solid Stock With Drain Panels	Page 10-11
ULTRA-LOC III Solid Stock No Drain Panels With Pump	Page 12-13
AQUA-XTREME Stock Sizes.....	Page 14
AQUA-XTREME Custom Price Chart.....	Page 15
How To Calculate The Price Of A Custom Cover & Onground Mesh Stock Sizes.....	Page 16
Mesh Green & Designer Color Custom Price Chart	Page 17
ULTRA-LOC III Solid Green & Designer Color Custom Price Chart.....	Page 18
Hardware Price Table	Page 19
Special Treatment Price Table.....	Page 20
*NEW Backyard Accents	Page 21
BABY-LOC Removable Fence Pricing.....	Page 22
Repair & Replacement Policy	Page 23
Image-Loc	Page 24
Logo-Loc & Spa Caps.....	Page 25
Luxury Liners Price Table	Page 26
Luxury Liner Guide.....	Page 27

TERMS:

NEW ACCOUNTS:	COD in advance or Credit Card until a LOOP-LOC Credit Application has been approved by our Credit Department.
RATED ACCOUNTS:	Net 30 - Strictly adhered to. Non-compliance will result in loss of Credit privileges.
OVERDUE ACCOUNTS:	Penalty for late payments - 2% interest per month will be charged.
DEPOSIT REQUIRED:	ALL non-stock custom orders require a deposit. Rated account does not preclude the necessity for a deposit.
F.O.B:	Hauppauge, New York 11788
CREDIT CARDS ACCEPTED:	VISA, MASTERCARD, DISCOVER, AMERICAN EXPRESS & CHECK BY FAX OR EMAIL Fax: 631-582-6337 or Email: accounting@looploc.com

FOR 2021 ALL LOOP-LOC MESH STOCK COVERS SHIP FREE!!!

** Free shipping is available for all mesh stock covers weighing 150 lbs or less.
Excludes: Commercial Covers, International, Canadian and Drop Shipments.

**Ask us about our 30+ Manufacturer Standards for custom covers.
Order by using Loop-Loc's plate #'s!**

Visit our new web site at www.looploc.com to see all the great new features:

- Login and view your open estimate
- Answer all your technical questions online
- Place deposits with your Credit Card
- Get instant Quotes
- Place your Estimates and Orders

Aqua-Xtreme Stock Sizes Now Available

**Purchase a liner and a cover for the same pool within the same year and receive \$\$ off!
All LOOP-LOC SAFETY COVERS are backed with a 15 year Pro-Rated Warranty!**

STAY CONNECTED!



390 Motor Parkway
Hauppauge, NY 11788
Phone: 631-582-2626
Email: sales@looploc.com
Fax: 631-582-2636

LOOP-LOC MESH GREEN STOCK

Manufactured w/LOOP-LOC II Super Dense Mesh Green Mesh Safety Swimming Pool Covers

MESH STOCK COVERS *SHIP FREE - AVAILABLE FOR SHIPMENT WITHIN 24 HOURS!

PRICES: (Prices listed are manufacturer's suggested retail.)

Any cover requiring any special treatments (such as cutouts) must be priced as a non-stock (custom) item.
(See Custom LOOP-LOC Green Mesh Safety Swimming Pool Covers price chart, page 17.)

HARDWARE:

- Necessary quantities of hardware are represented in all prices, which includes Standard Brass Anchors, Regular Stainless Steel Springs, Vinyl Tubular Spring Covers, Metal Installation Tool and a Storage Bag.
- When substituting Wood Deck Anchor Flanges always add the following: Approximate 5' Sections: Add \$.19 per square foot to overall square-footage price of cover. Approximate 3' Sections: Add \$.21 per square foot to overall square-footage price of cover.

RETURNS:

Unopened Stock covers may be returned **within 30 days** at a 10% restocking charge.

RECTANGLES

IMPORTANT STOCK SIZE INFORMATION:

For pools NO LARGER THAN 20' X 50', LOOP-LOC's Stock Rectangle covers will fit your pool if:

- the pool length and/or width is up to 3" smaller than listed below, and a minimum of 36" of deck is available.
- the pool length and/or width is up to 3" larger than listed below, a minimum of 30" of deck is available, and the coping is 10" wide or less.



POOL SIZE	COVER SIZE	PRICE	SETS OF HARDWARE	SQUARE FOOTAGE	ID #	POOL SIZE	COVER SIZE	PRICE	SETS OF HARDWARE	SQUARE FOOTAGE	ID #
8' x 8'	10' x 10'	\$ 351	12	100	222	18' x 40'	20' x 42'	\$ 1,619	28	840	207
10' x 10'	12' x 12'	\$ 497	16	144	282	18' x 42'	20' x 44'	\$ 1,723	30	880	208
10' x 20'	12' x 22'	\$ 862	18	264	237	18' x 44'	20' x 46'	\$ 1,736	30	920	240
12' x 12'	14' x 14'	\$ 677	16	196	283	18' x 45'	20' x 47'	\$ 1,820	30	940	241
12' x 24'	14' x 26'	\$ 977	22	364	188	18' x 50'	20' x 52'	\$ 2,051	32	1040	242
12' x 27'	14' x 29'	\$ 1,058	22	406	189	20' x 20'	22' x 22'	\$ 1,294	24	484	369
12' x 28'	14' x 30'	\$ 1,094	22	420	190	20' x 36'	22' x 38'	\$ 1,660	28	836	209
12' x 32'	14' x 34'	\$ 1,171	24	476	366	20' x 38'	22' x 40'	\$ 1,681	28	880	210
14' x 28'	16' x 30'	\$ 1,177	22	480	191	20' x 40'	22' x 42'	\$ 1,685	28	924	211
14' x 30'	16' x 32'	\$ 1,240	24	512	367	20' x 41'	22' x 43'	\$ 1,896	30	946	243
14' x 32'	16' x 34'	\$ 1,248	24	544	238	20' x 42'	22' x 44'	\$ 1,897	30	968	212
15' x 30'	17' x 32'	\$ 1,248	24	544	192	20' x 44'	22' x 46'	\$ 1,917	30	1012	213
15' x 32'	17' x 34'	\$ 1,316	24	578	193	20' x 45'	22' x 47'	\$ 1,961	30	1034	214
15' x 34'	17' x 36'	\$ 1,326	24	612	194	20' x 46'	22' x 48'	\$ 1,980	32	1056	244
16' x 24'	18' x 26'	\$ 1,149	22	468	195	20' x 50'	22' x 52'	\$ 2,116	32	1144	215
16' x 30'	18' x 32'	\$ 1,326	24	576	196	20' x 51'	22' x 53'	\$ 2,318	34	1166	370
16' x 32'	18' x 34'	\$ 1,333	24	612	197	20' x 60'	23' x 63'	\$ 2,610	38	1449	371
16' x 34'	18' x 36'	\$ 1,421	24	648	198	21' x 41'	23' x 43'	\$ 1,892	30	989	216
16' x 36'	18' x 38'	\$ 1,450	26	684	200	22' x 44'	24' x 46'	\$ 2,147	30	1104	217
16' x 38'	18' x 40'	\$ 1,479	26	720	201	24' x 40'	26' x 42'	\$ 2,098	30	1092	245
16' x 40'	18' x 42'	\$ 1,552	26	756	202	24' x 48'	26'6 x 50'6	\$ 2,567	34	1377	246
16' x 50'	18' x 52'	\$ 1,926	32	936	368	24' x 50'	26'6 x 52'6	\$ 2,548	34	1431	372
17' x 34'	19' x 36'	\$ 1,499	26	684	203	25' x 45'	27'6 x 47'6	\$ 2,359	32	1344	218
18' x 32'	20' x 34'	\$ 1,489	26	680	204	25' x 50'	27'6 x 52'6	\$ 2,554	34	1484	219
18' x 34'	20' x 36'	\$ 1,492	26	720	239	30' x 50'	33' x 53'	\$ 2,837	36	1749	220
18' x 36'	20' x 38'	\$ 1,495	28	760	205	30' x 60'	33' x 63'	\$ 3,135	40	2079	221
18' x 38'	20' x 40'	\$ 1,577	28	800	206						

The most common cover sizes are highlighted for your convenience.

*Excludes International, Canadian, and Drop Shipments

RECTANGLES INCLUDING EXTENSION CENTER END STEPS



LOOP-LOC
MESH GREEN STOCK

IMPORTANT STOCK SIZE INFORMATION:

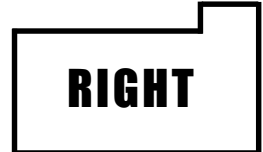
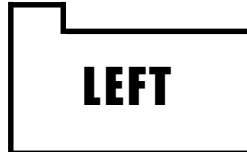
LOOP-LOC's Stock Rectangle covers with Center End Step will fit your pool if:

- the pool length and/or width of the **MAIN POOL** is up to 3" smaller than listed below, and a minimum of 36" of deck is available.
- the pool length and/or width of the **MAIN POOL** is up to 3" larger than listed below, a minimum of 30" of deck is available, and the coping is 10" wide or less.
- the length of the step is up to 6" smaller than listed below, and/or the width of the step is up to 12" smaller than listed. The length and width of the **MAIN POOL** area must match our listing below.

For Example: a 16' x 36' with 3'6" x 7' center end pool can use a 16' x 36' with 4' x 8' stock cover.
Please call our Customer Support Department if you have any questions.

POOL SIZE	COVER SIZE	PRICE	SETS OF HARDWARE	SQUARE FOOTAGE	ID#	POOL SIZE	COVER SIZE	PRICE	SETS OF HARDWARE	SQUARE FOOTAGE	ID#
12' x 24' + 4' x 6' center end (=12' x 28')	14' x 30'	\$ 1,129	26	420	124	16' x 36' + 4' x 8' center end (=16' x 40')	18' x 42'	\$ 1,594	30	756	159
12' x 24' + 4' x 8' center end (=12' x 28')	14' x 30'	\$ 1,148	26	420	125	16' x 38' + 4' x 8' center end (=16' x 42')	18' x 44'	\$ 1,668	30	792	373
14' x 28' + 4' x 6' center end (=14' x 32')	16' x 34'	\$ 1,309	26	544	247	16' x 40' + 4' x 8' center end (=16' x 44')	18' x 46'	\$ 1,708	30	828	127
14' x 28' + 4' x 8' center end (=14' x 32')	16' x 34'	\$ 1,319	26	544	126	18' x 36' + 3' x 6' center end (=18' x 39')	20' x 41'	\$ 1,651	30	820	164
15' x 30' + 4' x 8' center end (=15' x 34')	17' x 36'	\$ 1,410	28	612	288	18' x 36' + 3' x 8' center end (=18' x 39')	20' x 41'	\$ 1,662	30	820	165
16' x 24' + 4' x 8' center end (=16' x 28')	18' x 30'	\$ 1,310	26	540	248	18' x 36' + 4' x 6' center end (=18' x 40')	20' x 42'	\$ 1,666	30	840	129
16' x 32' + 3' x 6' center end (=16' x 35')	18' x 37'	\$ 1,435	28	666	154	18' x 36' + 4' x 8' center end (=18' x 40')	20' x 42'	\$ 1,668	30	840	166
16' x 32' + 3' x 8' center end (=16' x 35')	18' x 37'	\$ 1,446	28	666	155	18' x 40' + 4' x 8' center end (=18' x 44')	20' x 46'	\$ 1,830	30	920	130
16' x 32' + 4' x 6' center end (=16' x 36')	18' x 38'	\$ 1,450	28	684	156	20' x 40' + 3' x 8' center end (=20' x 43')	22' x 45'	\$ 1,913	30	990	169
16' x 32' + 4' x 8' center end (=16' x 36')	18' x 38'	\$ 1,455	28	684	157	20' x 40' + 4' x 6' center end (=20' x 44')	22' x 46'	\$ 1,937	32	1012	289
16' x 34' + 4' x 8' center end (=16' x 38')	18' x 40'	\$ 1,567	28	720	158	20' x 40' + 4' x 8' center end (=20' x 44')	22' x 46'	\$ 1,937	30	1012	170
16' x 36' + 3' x 8' center end (=16' x 39')	18' x 41'	\$ 1,582	30	738	365	25' x 50' + 4' x 8' center end (=25' x 54')	27'6" x 56'6"	\$ 2,973	38	1596	375

RECTANGLES PLUS EXTENSION FLUSH LEFT & FLUSH RIGHT STEPS**



IMPORTANT STOCK SIZE INFORMATION:

LOOP-LOC's Stock Rectangle Plus Flush Left & Flush Right Step Extensions are manufactured with extra large pads and extended chafe wear strips to accommodate some variance in pool size. Please mail, email or fax your drawing, being sure to indicate the amount of available decking, and we'll use stock if possible unless otherwise instructed.

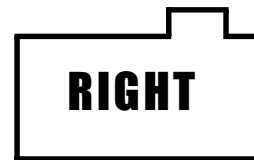
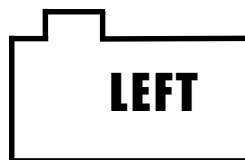
POOL SIZE	COVER SIZE	PRICE	SETS OF HARDWARE	SQUARE FOOTAGE	LEFT ID#	RIGHT ID#
16' x 32' + 4' x 6'	18' x 34' + 4' x 8'	\$ 1,518	28	612 + 32	382	383
16' x 32' + 4' x 8'	18' x 34' + 4' x 10'	\$ 1,534	26	612 + 40	102	101
16' x 34' + 4' x 8'	18' x 36' + 4' x 10'	\$ 1,619	28	648 + 40	385	384
18' x 36' + 4' x 8'	20' x 38' + 4' x 10'	\$ 1,725	30	760 + 40	152	153
20' x 40' + 4' x 8'	22' x 42' + 4' x 10'	\$ 1,923	30	924 + 40	104	103

EUROPEAN STOCK RECTANGLES

POOL SIZE	COVER SIZE	PRICE	SETS OF HARDWARE	ID#
6m x 3m	6.6m x 3.6m	\$ 823	20	800
8m x 4m	8.6m x 4.6m	\$ 1,109	22	801
10m x 5m	10.6m x 5.6m	\$ 1,415	26	802
12m x 6m	12.6m x 6.6m	\$ 1,675	28	803
14m x 7m	14.6m x 7.6m	\$ 2,444	34	804

STOCK COVERS - AVAILABLE FOR SHIPMENT WITHIN 24 HOURS!

RECTANGLES PLUS EXTENSION LEFT & RIGHT SIDE STEPS*



IMPORTANT STOCK SIZE INFORMATION:

LOOP-LOC's Stock Rectangle Plus Left & Right Step Extensions are manufactured with extra large pads and extended chafe wear strips to accommodate some variance in pool size. Please mail, email or fax your drawing, being sure to indicate the amount of available decking, and we'll use stock if possible unless otherwise instructed.

	POOL SIZE	COVER SIZE	PRICE	SETS OF HARDWARE	SQUARE FOOTAGE	ID#		POOL SIZE	COVER SIZE	PRICE	SETS OF HARDWARE	SQUARE FOOTAGE	ID#
1' OFFSET LEFT STEP	16' x 32' + 4' x 6'	18' x 34' + 4' x 8'	\$ 1,518	28	612+32	138	1' OFFSET RIGHT STEP	16' x 32' + 4' x 6'	18' x 34' + 4' x 8'	\$ 1,518	28	612+32	249
	16' x 32' + 4' x 8'	18' x 34' + 4' x 10'	\$ 1,534	28	612+40	106		16' x 32' + 4' x 8'	18' x 34' + 4' x 10'	\$ 1,534	28	612+40	105
	16' x 36' + 4' x 8'	18' x 38' + 4' x 10'	\$ 1,665	30	684+40	253		16' x 36' + 4' x 8'	18' x 38' + 4' x 10'	\$ 1,665	30	684+40	276
	18' x 36' + 4' x 8'	20' x 38' + 4' x 10'	\$ 1,725	32	760+40	148		18' x 36' + 4' x 8'	20' x 38' + 4' x 10'	\$ 1,725	32	760+40	149
	20' x 40' + 4' x 8'	22' x 42' + 4' x 10'	\$ 1,923	32	924+40	108		20' x 40' + 4' x 8'	22' x 42' + 4' x 10'	\$ 1,923	32	924+40	107
2' OFFSET LEFT STEP	16' x 32' + 4' x 6'	18' x 34' + 4' x 8'	\$ 1,518	30	612+32	137	2' OFFSET RIGHT STEP	16' x 32' + 4' x 6'	18' x 34' + 4' x 8'	\$ 1,518	30	612+32	136
	16' x 32' + 4' x 8'	18' x 34' + 4' x 10'	\$ 1,548	28	612+40	284		16' x 32' + 4' x 8'	18' x 34' + 4' x 10'	\$ 1,548	28	612+40	250
	16' x 34' + 4' x 8'	18' x 36' + 4' x 10'	\$ 1,619	28	648+40	285		16' x 34' + 4' x 8'	18' x 36' + 4' x 10'	\$ 1,619	28	648+40	363
	16' x 36' + 4' x 8'	18' x 38' + 4' x 10'	\$ 1,665	30	684+40	254		16' x 36' + 4' x 8'	18' x 38' + 4' x 10'	\$ 1,665	30	684+40	146
	18' x 36' + 4' x 6'	20' x 38' + 4' x 8'	\$ 1,743	32	760+32	268		18' x 36' + 4' x 6'	20' x 38' + 4' x 8'	\$ 1,743	32	760+32	387
	18' x 36' + 4' x 8'	20' x 38' + 4' x 10'	\$ 1,725	30	760+40	150		18' x 36' + 4' x 8'	20' x 38' + 4' x 10'	\$ 1,725	30	760+40	151
	20' x 40' + 4' x 8'	22' x 42' + 4' x 10'	\$ 1,923	32	924+40	110		20' x 40' + 4' x 8'	22' x 42' + 4' x 10'	\$ 1,923	32	924+40	109
3' OFFSET LEFT STEP	18' x 36' + 4' x 8'	20' x 38' + 4' x 10'	\$ 1,743	30	760+40	386	3' OFFSET RIGHT STEP	18' x 36' + 4' x 8'	20' x 38' + 4' x 10'	\$ 1,743	30	760+40	286
	20' x 40' + 4' x 8'	22' x 42' + 4' x 10'	\$ 1,943	32	924+40	270		20' x 40' + 4' x 8'	22' x 42' + 4' x 10'	\$ 1,943	32	924+40	251
4' OFFSET LEFT STEP	18' x 36' + 4' x 8'	20' x 38' + 4' x 10'	\$ 1,743	30	760+40	255	4' OFFSET RIGHT STEP	18' x 36' + 4' x 8'	20' x 38' + 4' x 10'	\$ 1,743	30	760+40	252
	20' x 40' + 4' x 8'	22' x 42' + 4' x 10'	\$ 1,943	32	924+40	256		20' x 40' + 4' x 8'	22' x 42' + 4' x 10'	\$ 1,943	32	924+40	281

RECTANGLES INCLUDING EXTENSION CENTER END STEP PLUS 2 BOW ENDS

+2 BOW ENDS

IMPORTANT STOCK SIZE INFORMATION:

LOOP-LOC's Stock Rectangle with Center End Extension and Radius Corners are manufactured with extra large pads and extended chafe wear strips to accommodate some variance in pool size. Please mail, email or fax your drawing, being sure to indicate the amount of available decking, and we'll use stock if possible unless otherwise instructed.

	POOL SIZE	COVER SIZE	PRICE	SETS OF HARDWARE	SQUARE FOOTAGE	ID #
4' Radius	16' x 32' + 4' x 8' (=16' x 36' center end w/2 bows)	18' x 38'	\$ 1,656	32	684	292
	20' x 40' + 4' x 8' (=20' x 44' center end w/2 bows)	22' x 46'	\$ 2,115	38	1012	273
4'6 Radius	17' x 33' + 3'9 x 8' (=17' x 36'9 center end w/2 bows)	19' x 38'9	\$ 1,724	36	741	271
	19' x 37' + 3'9 x 8' (=19' x 40'9 center end w/2 bows)	21' x 42'9	\$ 1,932	36	903	272

RECTANGLES INCLUDING EXTENSION JEWEL - CENTER END STEP

JEWEL

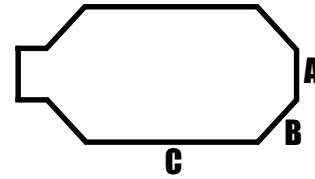
IMPORTANT STOCK SIZE INFORMATION:

LOOP-LOC's Stock Jewels with Center End Extension are manufactured with extra large pads and extended chafe wear strips to accommodate some variance in pool size. Please mail, email or fax your drawing, being sure to indicate the amount of available decking, and we'll use stock if possible unless otherwise instructed.

	POOL SIZE	COVER SIZE	PRICE	SETS OF HARDWARE	SQUARE FOOTAGE	ID #
	15'6 x 30'9 + 4' x 8' (=15'6 x 34'9 center end w/2 bows)	17'6 x 36'8	\$ 1,617	34	666	267
	15'6 x 34'6 + 4' x 8' (=15'6 x 38'6 center end w/2 bows)	17'6 x 40'6	\$ 1,717	30	738	133
	17'6 x 36'8 + 4' x 8' (=17'6 x 40'8 center end w/2 bows)	19'6 x 42'8	\$ 1,912	30	860	134

*Extensions are determined by standing at the shallow end, looking toward the deep end.
The most common cover sizes are highlighted for your convenience.

GRECIAN WITH CENTER END EXTENSION

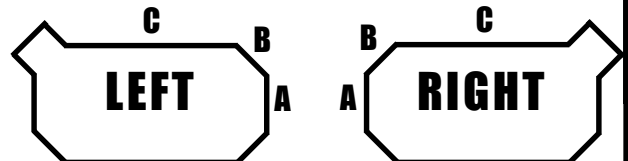


IMPORTANT STOCK SIZE INFORMATION:

LOOP-LOC's Stock Grecean with Center End Extension are manufactured with extra large pads and extended chafe wear strips to accommodate some variance in pool size. Please mail, email or fax your drawing, being sure to indicate the amount of available decking, and we'll use stock if possible unless otherwise instructed.

POOL SIZE	COVER SIZE	PRICE	SETS OF HARDWARE	SQUARE FOOTAGE	WALL DIMENSIONS			ID #
					A	B	C	
16'6" x 32'6" + 4' x 6' (= 16'6" x 36'6" center end w/2 bows)	18'6" x 38'6"	\$ 1,716	32	741	8'	6'	24'	275
16'6" x 32'6" + 4' x 8' (= 16'6" x 36'6" center end w/2 bows)	18'6" x 38'6"	\$ 1,736	30	741	8'	6'	24'	160
16'6" x 34'6" + 4' x 8' (= 16'6" x 38'6" center end w/2 bows)	18'6" x 40'6"	\$ 1,850	30	779	8'	6'	26'	161
16'6" x 35'6" + 3'6" x 7' (= 16'6" x 39' center end w/2 bows)	18'6" x 41'	\$ 1,850	30	779	8'	6'	27'	162
16'6" x 35'6" + 4' x 6' (= 16'6" x 39'6" center end w/2 bows)	18'6" x 41'6"	\$ 1,884	30	798	8'	6'	27'	163
16'6" x 36'6" + 4' x 8' (= 16'6" x 40'6" center end w/2 bows)	18'6" x 42'6"	\$ 1,891	30	817	8'	6'	28'	269
16'10" x 36'10" + 3'9" x 8' (= 16'10" x 40'7" center end w/2 bows)	19' x 42'9"	\$ 1,891	30	817	8'2"	6'2"	28'2"	291
18' x 36' + 4' x 8' (= 18' x 40' center end w/2 bows)	20' x 42'	\$ 1,902	30	840	8'	7'	26'	167
18'6" x 36'6" + 4' x 8' (= 18'6" x 40'6" center end w/2 bows)	20'6" x 42'6"	\$ 1,920	32	903	10'	6'	28'	277
18' x 37' + 4' x 8' (= 18' x 41' center end w/2 bows)	20' x 43'	\$ 1,936	30	860	8'	7'	27'	168
20' x 40' + 4' x 8' (= 20' x 44' center end w/2 bows)	22' x 46'	\$ 2,140	34	1012	8'	8'6"	28'	171
20'9" x 39'9" + 4' x 8' (= 20'9" x 43'9" center end w/2 bows)	23' x 46'	\$ 2,202	34	1058	8'	9'	27'	172

GRECIAN WITH LEFT & RIGHT SIDE EXTENSIONS *



IMPORTANT STOCK SIZE INFORMATION:

LOOP-LOC's Stock Grecean with Left & Right Side Step Extension are manufactured with extra large pads and extended chafe wear strips to accommodate some variance in pool size. Please mail, email or fax your drawing, being sure to indicate the amount of available decking, and we'll use stock if possible unless otherwise instructed.

POOL SIZE	COVER SIZE	PRICE	SETS OF HARDWARE	SQUARE FOOTAGE	WALL DIMENSIONS			LEFT ID#	RIGHT ID#
					A	B	C		
16'6" x 32'6" + 4' x 6' (w/3 bows)	18'6" x 34'6" + 4' x 8'	\$ 1,801	30	665 + 32	8'	6'	24'	112	111
16'6" x 34'6" + 4' x 6' (w/3 bows)	18'6" x 36'6" + 4' x 8'	\$ 1,832	32	703 + 32	8'	6'	26'	114	113
16'6" x 35'6" + 4' x 6' (w/3 bows)	18'6" x 37'6" + 4' x 8'	\$ 1,890	32	722 + 32	8'	6'	27'	116	115
19'4" x 35'4" + 4' x 8' (w/3 bows)	21'6" x 37'6" + 4' x 10'	\$ 2,174	36	836 + 40	8'	8'	24'	376	377
19'6" x 37'6" + 4' x 8' (w/3 bows)	21'6" x 39'6" + 4' x 10'	\$ 2,203	36	880 + 40	8'	8'	26'	120	119
20'9" x 39'9" + 4' x 8' (w/3 bows)	23' x 42' + 4' x 10'	\$ 2,270	36	966 + 40	8'	9'	27'	122	121

FORMFIT OVAL

**APPROX.
3x3 GRIDS**

IMPORTANT STOCK SIZE INFORMATION:

LOOP-LOC's Stock Formfit Oval will fit your pool if:

- the pool length and/or width is up to 3" smaller than listed below, and a minimum of 39" of deck is available.
- the pool length and/or width is up to 3" larger than listed below, a minimum of 33" of deck is available, and the coping is 10" wide or less.

POOL SIZE	COVER SIZE	PRICE	SETS OF HARDWARE	SQUARE FOOTAGE	ID#
17' x 35'	19'6" x 37'6"	\$ 2,286	40	760	142

FORMFIT ROUND

**APPROX.
3x3 GRIDS**

POOL SIZE	COVER SIZE	PRICE	SETS OF HARDWARE	SQUARE FOOTAGE	ID #
6' x 6'	8' x 8'	\$ 331	12	64	293
6'6" x 6'6" OR 7' x 7'	9' x 9'	\$ 416	12	81	143
7' x 7' OR 7'6" x 7'6"	9'6" x 9'6"	\$ 492	12	100	187
7'6" x 7'6" OR 8' x 8'	10' x 10'	\$ 492	12	100	140
8' x 8' OR 8'6" x 8'6"	10'6" x 10'6"	\$ 590	12	121	139
10' x 10'	12'6" x 12'6"	\$ 837	16	169	257
24' x 24'	26'6" x 26'6"	\$ 2,295	32	729	258

*Extensions are determined by standing at the shallow end, looking toward the deep end.

LOOP-LOC DESIGNER COLOR STOCK

LOOP-LOC II SUPER DENSE MESH DESIGNER COLOR STOCK Available in: Blue, Tan, Black & Gray

PRICES: (Prices listed are manufacturer's suggested retail.)

Any cover requiring any special treatments (such as cutouts) must be priced as a non-stock (custom) item. (See Custom LOOP-LOC Designer Color Mesh Safety Swimming Pool Covers price chart, page 17.)

HARDWARE:

- Necessary quantities of hardware are represented in all prices, which includes Standard Brass Anchors, Regular Stainless Steel Springs, Vinyl Tubular Spring Covers, Metal Installation Tool and a Storage Bag. • Designer Color Stock manufactured in approx. 5' spacing.

RETURNS:

Unopened Stock covers may be returned **within 30 days** at a 10% restocking charge.

RECTANGLES

IMPORTANT STOCK SIZE INFORMATION:

For pools NO LARGER THAN 20' X 50', LOOP-LOC's Stock Rectangle covers will fit your pool if:

- the pool length and/or width is up to 3" smaller than listed below, and a minimum of 36" of deck is available.
- the pool length and/or width is up to 3" larger than listed below, a minimum of 30" of deck is available, and the coping is 10" wide or less.

POOL SIZE	COVER SIZE	PRICE	SETS OF HARDWARE	SQUARE FOOTAGE	MESH BLUE ID #	MESH TAN ID #	MESH BLACK ID #	MESH GRAY ID #
12' x 24'	14' x 26'	\$ 1,094	22	364	813	837	877	861
14' x 28'	16' x 30'	\$ 1,318	22	480	814	838	878	862
15' x 30'	17' x 32'	\$ 1,398	24	544	815	839	879	863
16' x 32'	18' x 34'	\$ 1,481	24	612	816	840	880	864
16' x 34'	18' x 36'	\$ 1,594	24	648	817	841	881	865
16' x 36'	18' x 38'	\$ 1,624	26	684	818	842	882	866
16' x 38'	18' x 40'	\$ 1,661	26	720	819	843	883	867
16' x 40'	18' x 42'	\$ 1,740	26	756	820	844	884	868
18' x 36'	20' x 38'	\$ 1,629	28	760	821	845	885	869
18' x 38'	20' x 40'	\$ 1,767	28	800	822	846	886	870
18' x 40'	20' x 42'	\$ 1,813	28	840	823	847	887	871
20' x 40'	22' x 42'	\$ 1,887	28	924	824	848	888	872
20' x 41'	22' x 43'	\$ 2,124	30	946	825	849	889	873
20' x 42'	22' x 44'	\$ 2,125	30	968	826	850	890	874
20' x 44'	22' x 46'	\$ 2,146	30	1012	827	851	891	875
20' x 50'	22' x 52'	\$ 2,370	32	1144	828	852	892	876

RECTANGLES INCLUDING EXTENSION CENTER END STEPS

IMPORTANT STOCK SIZE INFORMATION:

LOOP-LOC's Stock Rectangle covers with Center End Step will fit your pool if:

- the pool length and/or width of the **MAIN POOL** is up to 3" smaller than listed below, and a minimum of 36" of deck is available.
- the pool length and/or width of the **MAIN POOL** is up to 3" larger than listed below, a minimum of 30" of deck is available, and the coping is 10" wide or less.
- the length of the step is up to 6" smaller than listed below, and/or the width of the step is up to 12" smaller than listed. The length and width of the **MAIN POOL** area must match our listing below.

For Example: a 16' x 36' with 3'6 x 7' center end pool can use a 16' x 36' with 4' x 8' stock cover.

Please call our Customer Support Department if you have any questions.

POOL SIZE	COVER SIZE	PRICE	SETS OF HARDWARE	SQUARE FOOTAGE	MESH BLUE ID #	MESH TAN ID #	MESH BLACK ID #	MESH GRAY ID #
14' x 28' + 4' x 8' center end (=14' x 32')	16' x 34'	\$ 1,478	26	544	805	829	893	853
16' x 32' + 4' x 6' center end (=16' x 36')	18' x 38'	\$ 1,625	28	684	806	830	894	854
16' x 32' + 4' x 8' center end (=16' x 36')	18' x 38'	\$ 1,618	28	684	807	831	895	855
16' x 34' + 4' x 8' center end (=16' x 38')	18' x 40'	\$ 1,758	28	720	808	832	896	856
16' x 36' + 4' x 8' center end (=16' x 40')	18' x 42'	\$ 1,786	30	756	809	833	897	857
18' x 36' + 4' x 6' center end (=18' x 40')	20' x 42'	\$ 1,834	30	840	810	834	898	858
18' x 36' + 4' x 8' center end (=18' x 40')	20' x 42'	\$ 1,837	30	840	811	835	899	859
20' x 40' + 4' x 8' center end (=20' x 44')	22' x 46'	\$ 2,165	30	1012	812	836	900	860

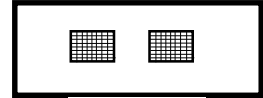
ULTRA-LOC III SOLID DESIGNER COLOR STOCK WITH MESH DRAINS Available in: Blue, Tan & Gray

Solid Coated PVC with Rip Stop Scrim Swimming Pool Covers with Mesh Drain Panels.

RECTANGLES

IMPORTANT STOCK SIZE INFORMATION: See page 12 Rectangles

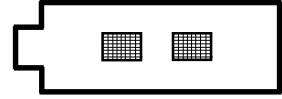
POOL SIZE	COVER SIZE	PRICE	SETS OF HARDWARE	SQUARE FOOTAGE	SOLID BLUE ID #	SOLID TAN ID #	SOLID GRAY ID #
12' x 24'	14' x 26'	\$ 1,339	22	364	708	750	600
14' x 28'	16' x 30'	\$ 1,645	22	480	709	751	601
15' x 30'	17' x 32'	\$ 1,731	24	544	710	752	602
16' x 32'	18' x 34'	\$ 1,865	24	612	711	753	603
16' x 34'	18' x 36'	\$ 1,985	24	648	712	754	604
16' x 36'	18' x 38'	\$ 2,021	26	684	713	755	605
16' x 40'	18' x 42'	\$ 2,144	26	756	714	756	606
18' x 36'	20' x 38'	\$ 2,132	28	760	715	757	607
18' x 38'	20' x 40'	\$ 2,299	28	800	716	758	608
18' x 40'	20' x 42'	\$ 2,391	28	840	717	759	609
20' x 40'	22' x 42'	\$ 2,589	28	924	718	760	610
20' x 42'	22' x 44'	\$ 2,752	30	968	719	761	611
20' x 44'	22' x 46'	\$ 2,857	30	1012	720	762	612



RECTANGLES INCLUDING EXTENSION CENTER END STEPS

IMPORTANT STOCK SIZE INFORMATION: See page 12 Rectangles Including Extension Center End Steps

POOL SIZE	COVER SIZE	PRICE	SETS OF HARDWARE	SQUARE FOOTAGE	SOLID BLUE ID #	SOLID TAN ID #	SOLID GRAY ID #
14' x 28' + 4' x 8' center end (=14' x 32')	16' x 34'	\$ 1,726	26	544	700	742	613
16' x 32' + 4' x 6' center end (=16' x 36')	18' x 38'	\$ 2,004	28	684	701	743	614
16' x 32' + 4' x 8' center end (=16' x 36')	18' x 38'	\$ 2,007	28	684	702	744	615
16' x 34' + 4' x 8' center end (=16' x 38')	18' x 40'	\$ 2,045	28	720	703	745	616
16' x 36' + 4' x 8' center end (=16' x 40')	18' x 42'	\$ 2,153	30	756	704	746	617
18' x 36' + 4' x 6' center end (=18' x 40')	20' x 42'	\$ 2,297	30	840	705	747	618
18' x 36' + 4' x 8' center end (=18' x 40')	20' x 42'	\$ 2,306	30	840	706	748	619
20' x 40' + 4' x 8' center end (=20' x 44')	22' x 46'	\$ 2,640	30	1012	707	749	620



ULTRA-LOC III DESIGNER COLOR STOCK NO DRAINS W/AUTOMATIC PUMP Available in: Blue, Tan & Gray

Solid Coated PVC with Rip Stop Scrim Swimming Pool Covers with Automatic Cover Pump. No drains require automatic cover pump (included in pricing) to maintain ASTM Safety Guidelines. No ULTRA-LOC III Solid stock without drains will be shipped without the Pump.

RECTANGLES

IMPORTANT STOCK SIZE INFORMATION: See page 14 Rectangles

POOL SIZE	COVER SIZE	PRICE	SETS OF HARDWARE	SQUARE FOOTAGE	SOLID BLUE ID #	SOLID TAN ID #	SOLID GRAY ID #
12' x 24'	14' x 26'	\$ 1,630	22	364	729	771	621
14' x 28'	16' x 30'	\$ 1,936	22	480	730	772	622
15' x 30'	17' x 32'	\$ 2,022	24	544	731	773	623
16' x 32'	18' x 34'	\$ 2,156	24	612	732	774	624
16' x 34'	18' x 36'	\$ 2,276	24	648	733	775	625
16' x 36'	18' x 38'	\$ 2,312	26	684	734	776	626
16' x 40'	18' x 42'	\$ 2,435	26	756	735	777	627
18' x 36'	20' x 38'	\$ 2,423	28	760	736	778	628
18' x 38'	20' x 40'	\$ 2,590	28	800	737	779	629
18' x 40'	20' x 42'	\$ 2,682	28	840	738	780	630
20' x 40'	22' x 42'	\$ 2,880	28	924	739	781	631
20' x 42'	22' x 44'	\$ 3,043	30	968	740	782	632
20' x 44'	22' x 46'	\$ 3,148	30	1012	741	783	633



RECTANGLES INCLUDING EXTENSION CENTER END STEPS

IMPORTANT STOCK SIZE INFORMATION: See page 14 Rectangles Including Extension Center End Steps

POOL SIZE	COVER SIZE	PRICE	SETS OF HARDWARE	SQUARE FOOTAGE	SOLID BLUE ID #	SOLID TAN ID #	SOLID GRAY ID #
14' x 28' + 4' x 8' center end (=14' x 32')	16' x 34'	\$ 2,017	26	544	721	763	634
16' x 32' + 4' x 6' center end (=16' x 36')	18' x 38'	\$ 2,295	28	684	722	764	635
16' x 32' + 4' x 8' center end (=16' x 36')	18' x 38'	\$ 2,298	28	684	723	765	636
16' x 34' + 4' x 8' center end (=16' x 38')	18' x 40'	\$ 2,336	28	720	724	766	637
16' x 36' + 4' x 8' center end (=16' x 40')	18' x 42'	\$ 2,444	30	756	725	767	638
18' x 36' + 4' x 6' center end (=18' x 40')	20' x 42'	\$ 2,588	30	840	726	768	639
18' x 36' + 4' x 8' center end (=18' x 40')	20' x 42'	\$ 2,597	30	840	727	769	640
20' x 40' + 4' x 8' center end (=20' x 44')	22' x 46'	\$ 2,931	30	1012	728	770	641



ULTRA-LOC SOLID DESIGNER COLOR STOCK

ULTRA-LOC III GREEN SOLID STOCK

WITH MESH DRAIN PANELS ONLY

STOCK COVERS - AVAILABLE FOR SHIPMENT WITHIN 24 HOURS!

Solid Coated PVC with Rip Stop Scrim with Mesh Drain Panels.

PRICES: (Prices listed are manufacturer's suggested retail)

Any cover requiring any special treatments (such as cutouts) must be priced as a non-stock (custom) item.

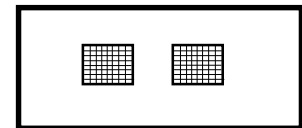
Any cover length greater than 44' will be manufactured with 3 drain panels.

(See Custom ULTRA-LOC SOLID III Swimming Pool Covers price chart, page 18.)

HARDWARE:

- Necessary quantities of hardware are represented in all prices, which includes Standard Brass Anchors, Regular Stainless Steel Springs, Vinyl Tubular Spring Covers, Metal Installation Tool and a Storage Bag.
- When substituting Wood Deck Anchor Flanges always add the following: Approximate 5' Sections: Add \$.19 per

RECTANGLES



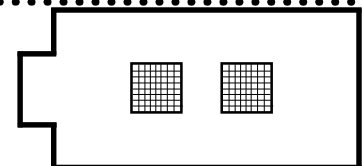
IMPORTANT STOCK SIZE INFORMATION:

ULTRA-LOC III SOLID Stock Rectangle covers will fit your pool if:

- the pool length and/or width is up to 3" smaller than listed below, and a minimum of 36" of deck is available.
- the pool length and/or width is up to 3" larger than listed below, a minimum of 30" of deck is available, and the coping is 10" wide or less.

POOL SIZE	COVER SIZE	PRICE	SETS OF HARDWARE	SQUARE FOOTAGE	ID #
12' x 24'	14' x 26'	\$ 1,295	22	364	400
14' x 28'	16' x 30'	\$ 1,562	22	480	401
14' x 30'	16' x 32'	\$ 1,565	24	512	402
15' x 30'	17' x 32'	\$ 1,662	24	544	403
16' x 30'	18' x 32'	\$ 1,768	24	576	412
16' x 32'	18' x 34'	\$ 1,810	24	612	404
16' x 34'	18' x 36'	\$ 1,898	24	648	405
16' x 36'	18' x 38'	\$ 1,927	26	684	406
16' x 40'	18' x 42'	\$ 2,056	26	756	407
18' x 36'	20' x 38'	\$ 2,065	28	760	408
18' x 38'	20' x 40'	\$ 2,210	28	800	413
18' x 40'	20' x 42'	\$ 2,293	28	840	414
18' x 42'	20' x 44'	\$ 2,408	30	880	415
20' x 40'	22' x 42'	\$ 2,513	28	924	409
20' x 42'	22' x 44'	\$ 2,647	30	968	416
20' x 44'	22' x 46'	\$ 2,747	30	1012	410
20' x 46'	22' x 48'	\$ 2,823	32	1056	417
20' x 50'	22' x 52'	\$ 3,269	32	1144	411

RECTANGLES INCLUDING EXTENSION CENTER END STEPS



IMPORTANT STOCK SIZE INFORMATION:

ULTRA-LOC III SOLID Stock Rectangle with Center End Step covers will fit your pool if:

- the pool length and/or width of the **MAIN POOL** is up to 3" smaller than listed below, and a minimum of 36" of deck is available.
- the pool length and/or width of the **MAIN POOL** is up to 3" larger than listed below, a minimum of 30" of deck is available, and the coping is 10" wide or less.
- the length of the step is up to 6" smaller than listed below, and/or the width of the step is up to 12" smaller than listed. The length and width of the **MAIN POOL** area must match our listing below.

For Example: a 16' x 32' with 3'6 x 7' center end pool can use a 16' x 32' with 4' x 8' stock cover.

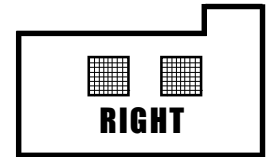
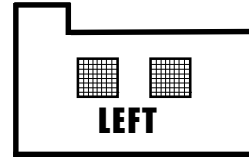
Please call our Customer Support Department if you have any questions.

POOL SIZE	COVER SIZE	PRICE	SETS OF HARDWARE	SQUARE FOOTAGE	ID #
14' x 28' + 4' x 8' center end (=14' x 32')	16' x 34'	\$ 1,662	26	544	436
16' x 32' + 4' x 6' center end (=16' x 36')	18' x 38'	\$ 1,941	28	684	437
16' x 32' + 4' x 8' center end (=16' x 36')	18' x 38'	\$ 1,944	28	684	438
16' x 34' + 4' x 8' center end (=16' x 38')	18' x 40'	\$ 1,967	28	720	439
16' x 36' + 4' x 8' center end (=16' x 40')	18' x 42'	\$ 2,066	30	756	440
18' x 36' + 3' x 8' center end (=18' x 39')	20' x 41'	\$ 2,159	30	820	441
18' x 36' + 4' x 6' center end (=18' x 40')	20' x 42'	\$ 2,227	30	840	442
18' x 36' + 4' x 8' center end (=18' x 40')	20' x 42'	\$ 2,230	30	840	443
20' x 40' + 4' x 8' center end (=20' x 44')	22' x 46'	\$ 2,550	30	1012	445

ULTRA-LOC III GREEN SOLID STOCK

WITH MESH DRAIN PANELS ONLY

RECTANGLES PLUS EXTENSION FLUSH LEFT & FLUSH RIGHT STEPS**

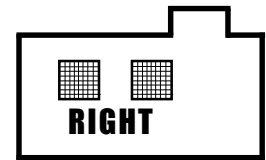
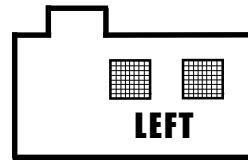


IMPORTANT STOCK SIZE INFORMATION:

ULTRA-LOC III SOLID Stock Rectangle Plus Flush Left & Flush Right Step Extensions are manufactured with extra large pads and extended chafe wear strips to accommodate some variance in pool size. Please mail, email or fax your drawing, being sure to indicate the amount of available decking, and we'll use stock if possible unless otherwise instructed.

POOL SIZE	COVER SIZE	PRICE	SETS OF HARDWARE	SQUARE FOOTAGE	LEFT ID #	RIGHT ID #
16' x 32' + 4' x 8'	18' x 34' + 4' x 10'	\$ 1,993	26	612 + 40	466	460
18' x 36' + 4' x 8'	20' x 38' + 4' x 10'	\$ 2,278	30	760 + 40	467	461
20' x 40' + 4' x 8'	22' x 42' + 4' x 10'	\$ 2,553	30	924 + 40	468	462

RECTANGLES PLUS EXTENSION LEFT & RIGHT SIDE STEPS**

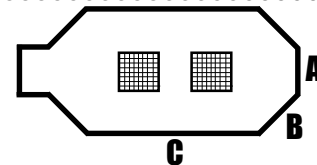


IMPORTANT STOCK SIZE INFORMATION:

ULTRA-LOC III SOLID Stock Rectangle Plus Left & Right Step Extensions are manufactured with extra large pads and extended chafe wear strips to accommodate some variance in pool size. Please mail, email or fax your drawing, being sure to indicate the amount of available decking, and we'll use stock if possible unless otherwise instructed.

	POOL SIZE	COVER SIZE	PRICE	SETS OF HARDWARE	SQUARE FOOTAGE	LEFT ID #	RIGHT ID #
1' OFFSET RIGHT & LEFT STEP	16' x 32' + 4' x 8'	18' x 34' + 4' x 10'	\$ 1,993	28	612 + 40	476	475
	18' x 36' + 4' x 8'	20' x 38' + 4' x 10'	\$ 2,278	32	760 + 40	481	477
	20' x 40' + 4' x 8'	22' x 42' + 4' x 10'	\$ 2,553	32	924 + 40	483	482
2' OFFSET RIGHT & LEFT STEP	16' x 32' + 4' x 8'	18' x 34' + 4' x 10'	\$ 1,993	28	612 + 40	478	472
	18' x 36' + 4' x 8'	20' x 38' + 4' x 10'	\$ 2,278	30	760 + 40	479	473
	20' x 40' + 4' x 8'	22' x 42' + 4' x 10'	\$ 2,553	32	924 + 40	480	474
4' OFFSET RIGHT & LEFT STEP	18' x 36' + 4' x 8'	20' x 38' + 4' x 10'	\$ 2,278	30	760 + 40	457	456
	20' x 40' + 4' x 8'	22' x 42' + 4' x 10'	\$ 2,553	32	924 + 40	459	458

GRECIAN WITH CENTER END EXTENSION



IMPORTANT STOCK SIZE INFORMATION:

ULTRA-LOC III SOLID Stock Grecian with Center End Extension are manufactured with extra large pads and extended chafe wear strips to accommodate some variance in pool size. Please mail, email or fax your drawing, being sure to indicate the amount of available decking, and we'll use stock if possible unless otherwise instructed.

POOL SIZE	COVER SIZE	PRICE	SETS OF HARDWARE	SQUARE FOOTAGE	WALL DIMENSIONS			ID#
					A	B	C	
16'6" x 32'6" + 4' x 8' (= 16'6" x 36'6" center end w/2 bows)	18'6" x 38'6"	\$ 2,189	30	741	8'	6'	24'	484
16'6" x 35'6" + 3'6" x 7' (= 16'6" x 39' center end w/2 bows)	18'6" x 41'	\$ 2,317	30	779	8'	6'	27'	485
16'6" x 35'6" + 4' x 6' (= 16'6" x 39'6" center end w/2 bows)	18'6" x 41'6"	\$ 2,343	30	798	8'	6'	27'	486
18'6" x 36'6" + 4' x 8' (= 18'6" x 40'6" center end w/2 bows)	20'6" x 42'6"	\$ 2,403	32	903	10'	6'	28'	487
18' x 37' + 4' x 8' (= 18' x 41' center end w/2 bows)	20' x 43'	\$ 2,427	30	860	8'	7'	27'	488
20'9" x 39'9" + 4' x 8' (= 20'9" x 43'9" center end w/2 bows)	23' x 46'	\$ 2,716	34	1058	8'	9'	27'	489

STOCK COVERS - AVAILABLE FOR SHIPMENT WITHIN 24 HOURS!

****Extensions are determined by standing at the shallow end, looking toward the deep end.**

IMPORTANT: ULTRA-LOC III SOLID owners must use a weighted cover pump to pump any standing water (rain or melting snow) off the cover on a regular basis, in some instances, where water does not completely drain.

ULTRA-LOC GREEN SOLID STOCK W/DRAINS

ULTRA-LOC III GREEN SOLID STOCK

WITH NO DRAIN PANELS SUPPLIED WITH AUTOMATIC COVER PUMP

STOCK COVERS - AVAILABLE FOR SHIPMENT WITHIN 24 HOURS!

Solid Coated PVC with Rip Stop Scrim with no drains require automatic cover pump (included in pricing) to maintain ASTM Safety Guidelines. No ULTRA-LOC III Solid stock without drains will be shipped without the Pump.

PRICES: (Prices listed are manufacturer's suggested retail.)

Any cover requiring any special treatments (such as cutouts) must be priced as a non-stock (custom) item. (See Custom ULTRA-LOC III SOLID Swimming Pool Covers price chart, page 18.)

HARDWARE:

- Necessary quantities of hardware are represented in all prices, which includes Standard Brass Anchors, Regular Stainless Steel Springs, Vinyl Tubular Spring Covers, Metal Installation Tool and a Storage Bag.
- When substituting Wood Deck Anchor Flanges always add the following: Approximate 5' Sections: Add \$.19 per square

RECTANGLES



IMPORTANT STOCK SIZE INFORMATION:

ULTRA-LOC III SOLID Stock Rectangle covers will fit your pool if:

- the pool length and/or width is up to 3" smaller than listed below, and a minimum of 36" of deck is available.
- the pool length and/or width is up to 3" larger than listed below, a minimum of 30" of deck is available, and the coping is 10" wide or less.

POOL SIZE	COVER SIZE	PRICE	SETS OF HARDWARE	SQUARE FOOTAGE	ID #
12' x 24'	14' x 26'	\$ 1,586	22	364	501
14' x 28'	16' x 30'	\$ 1,853	22	480	502
14' x 30'	16' x 32'	\$ 1,856	24	512	503
15' x 30'	17' x 32'	\$ 1,953	24	544	504
16' x 30'	18' x 32'	\$ 2,059	24	576	513
16' x 32'	18' x 34'	\$ 2,101	24	612	505
16' x 34'	18' x 36'	\$ 2,189	24	648	506
16' x 36'	18' x 38'	\$ 2,218	26	684	507
16' x 40'	18' x 42'	\$ 2,347	26	756	508
18' x 36'	20' x 38'	\$ 2,356	28	760	509
18' x 38'	20' x 40'	\$ 2,501	28	800	514
18' x 40'	20' x 42'	\$ 2,584	28	840	515
18' x 42'	20' x 44'	\$ 2,699	30	880	516
20' x 40'	22' x 42'	\$ 2,804	28	924	510
20' x 42'	22' x 44'	\$ 2,938	30	968	517
20' x 44'	22' x 46'	\$ 3,038	30	1012	511
20' x 46'	22' x 48'	\$ 3,114	32	1056	518
20' x 50'	22' x 52'	\$ 3,560	32	1144	512

RECTANGLES INCLUDING EXTENSION CENTER END STEPS



IMPORTANT STOCK SIZE INFORMATION:

ULTRA-LOC III SOLID Stock Rectangle with Center End Step covers will fit your pool if:

- the pool length and/or width of the **MAIN POOL** is up to 3" smaller than listed below, and a minimum of 36" of deck is available.
- the pool length and/or width of the **MAIN POOL** is up to 3" larger than listed below, a minimum of 30" of deck is available, and the coping is 10" wide or less.
- the length of the step is up to 6" smaller than listed below, and/or the width of the step is up to 12" smaller than listed. The length and width of the **MAIN POOL** area must match our listing below.

For Example: a 16' x 32' with 3'6 x 7' center end pool can use a 16' x 32' with 4' x 8' stock cover.

Please call our Customer Support Department if you have any questions.

POOL SIZE	COVER SIZE	PRICE	SETS OF HARDWARE	SQUARE FOOTAGE	ID #
14' x 28' + 4' x 8' center end (=14' x 32')	16' x 34'	\$ 1,953	26	544	535
16' x 32' + 4' x 6' center end (=16' x 36')	18' x 38'	\$ 2,232	28	684	536
16' x 32' + 4' x 8' center end (=16' x 36')	18' x 38'	\$ 2,235	28	684	537
16' x 34' + 4' x 8' center end (=16' x 38')	18' x 40'	\$ 2,258	28	720	538
16' x 36' + 4' x 8' center end (=16' x 40')	18' x 42'	\$ 2,357	30	756	539
18' x 36' + 3' x 8' center end (=18' x 39')	20' x 41'	\$ 2,450	30	820	540
18' x 36' + 4' x 6' center end (=18' x 40')	20' x 42'	\$ 2,518	30	840	541
18' x 36' + 4' x 8' center end (=18' x 40')	20' x 42'	\$ 2,521	30	840	542
20' x 40' + 4' x 8' center end (=20' x 44')	22' x 46'	\$ 2,841	30	1012	544

ULTRA-LOC III GREEN SOLID STOCK NO DRAINS

ULTRA-LOC III GREEN SOLID STOCK

WITH NO DRAIN PANELS SUPPLIED WITH AUTOMATIC COVER PUMP

RECTANGLES PLUS EXTENSION FLUSH LEFT & FLUSH RIGHT STEPS**

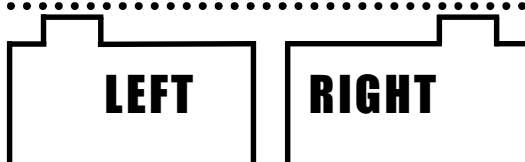


IMPORTANT STOCK SIZE INFORMATION:

ULTRA-LOC III SOLID Stock Rectangle Plus Flush Left & Flush Right Step Extensions are manufactured with extra large pads and extended chafe wear strips to accommodate some variance in pool size. Please mail, email or fax your drawing, being sure to indicate the amount of available decking, and we'll use stock if possible unless otherwise instructed.

POOL SIZE	COVER SIZE	PRICE	SETS OF HARDWARE	SQUARE FOOTAGE	LEFT ID #	RIGHT ID #
16' x 32' + 4' x 8'	18' x 34' + 4' x 10'	\$ 2,284	26	612 + 40	567	559
18' x 36' + 4' x 8'	20' x 38' + 4' x 10'	\$ 2,569	30	760 + 40	568	560
20' x 40' + 4' x 8'	22' x 42' + 4' x 10'	\$ 2,844	30	924 + 40	569	561

RECTANGLES PLUS EXTENSION LEFT & RIGHT SIDE STEPS**

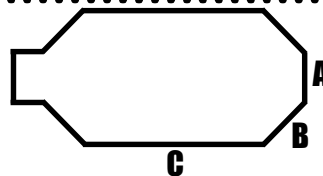


IMPORTANT STOCK SIZE INFORMATION:

ULTRA-LOC III SOLID Stock Rectangle Plus Left & Right Step Extensions are manufactured with extra large pads and extended chafe wear strips to accommodate some variance in pool size. Please mail, email or fax your drawing, being sure to indicate the amount of available decking, and we'll use stock if possible unless otherwise instructed.

	POOL SIZE	COVER SIZE	PRICE	SETS OF HARDWARE	SQUARE FOOTAGE	LEFT ID #	RIGHT ID #
1' OFFSET RIGHT & LEFT STEP	16' x 32' + 4' x 8'	18' x 34' + 4' x 10'	\$ 2,284	28	612 + 40	584	578
	18' x 36' + 4' x 8'	20' x 38' + 4' x 10'	\$ 2,569	32	760 + 40	583	582
	20' x 40' + 4' x 8'	22' x 42' + 4' x 10'	\$ 2,844	32	924 + 40	577	576
2' OFFSET RIGHT & LEFT STEP	16' x 32' + 4' x 8'	18' x 34' + 4' x 10'	\$ 2,284	28	612 + 40	579	573
	18' x 36' + 4' x 8'	20' x 38' + 4' x 10'	\$ 2,569	30	760 + 40	580	574
	20' x 40' + 4' x 8'	22' x 42' + 4' x 10'	\$ 2,844	32	924 + 40	581	575
4' OFFSET RIGHT & LEFT STEP	18' x 36' + 4' x 8'	20' x 38' + 4' x 10'	\$ 2,569	30	760 + 40	592	591
	20' x 40' + 4' x 8'	22' x 42' + 4' x 10'	\$ 2,844	32	924 + 40	595	593

GRECIAN WITH CENTER END EXTENSION



IMPORTANT STOCK SIZE INFORMATION:

ULTRA-LOC III SOLID Stock Grecian with Center End Extension are manufactured with extra large pads and extended chafe wear strips to accommodate some variance in pool size. Please mail, email or fax your drawing, being sure to indicate the amount of available decking, and we'll use stock if possible unless otherwise instructed.

POOL SIZE	COVER SIZE	PRICE	SETS OF HARDWARE	SQUARE FOOTAGE	WALL DIMENSIONS			ID#
					A	B	C	
16'6" x 32'6" + 4' x 8" (= 16'6" x 36'6" center end w/2 bows)	18'6" x 38'6"	\$ 2,480	30	741	8'	6'	24'	585
16'6" x 35'6" + 3'6" x 7" (= 16'6" x 39'6" center end w/2 bows)	18'6" x 41'	\$ 2,608	30	779	8'	6'	27'	586
16'6" x 35'6" + 4' x 6" (= 16'6" x 39'6" center end w/2 bows)	18'6" x 41'6"	\$ 2,634	30	798	8'	6'	27'	587
18'6" x 36'6" + 4' x 8" (= 18'6" x 40'6" center end w/2 bows)	20'6" x 42'6"	\$ 2,694	32	903	10'	6'	28'	588
18' x 37' + 4' x 8" (= 18' x 41' center end w/2 bows)	20' x 43'	\$ 2,718	30	860	8'	7'	27'	589
20'9" x 39'9" + 4' x 8" (= 20'9" x 43'9" center end w/2 bows)	23' x 46'	\$ 3,007	34	1058	8'	8'	27'	590

STOCK COVERS - AVAILABLE FOR SHIPMENT WITHIN 24 HOURS!

**Extensions are determined by standing at the shallow end, looking toward the deep end.

LOOP-LOC AQUA-XTREME MESH STOCK

AQUA-XTREME MESH STOCK *SHIP FREE-Available in: Hunter Green, Sapphire Navy, Mojave Brown & Steel Gray

PRICES: (Prices listed are manufacturer's suggested retail.)

Any cover requiring any special treatments (such as cutouts) must be priced as a non-stock (custom) item. (See Custom LOOP-LOC AQUA-XTREME Mesh Safety Swimming Pool Covers price chart, page 15.)

HARDWARE:

- Necessary quantities of hardware are represented in all prices, which includes Standard Brass Anchors, Regular Stainless Steel Springs, Vinyl Tubular Spring Covers, Metal Installation Tool and a Storage Bag. • Designer Color Stock manufactured in approx. 5' spacing.

RETURNS:

Unopened Stock covers may be returned **within 30 days** at a 10% restocking charge.



RECTANGLES

IMPORTANT STOCK SIZE INFORMATION:

- For pools NO LARGER THAN 20' X 50', AQUA-XTREME Stock Rectangle covers will fit your pool if:
- the pool length and/or width is up to 3" smaller than listed below, and a minimum of 36" of deck is available.
 - the pool length and/or width is up to 3" larger than listed below, a minimum of 30" of deck is available, and the coping is 10" wide or less.

POOL SIZE	COVER SIZE	PRICE	SETS OF HARDWARE	SQUARE FOOTAGE	HUNTER GREEN ID #	SAPPHIRE NAVY ID #	MOJAVE BROWN ID #	STEEL GRAY ID #
12' x 24'	14' x 26'	\$ 1,418	22	364	7062	7562	8062	8562
14' x 28'	16' x 30'	\$ 1,815	22	480	7065	7565	8065	8565
15' x 30'	17' x 32'	\$ 1,916	24	544	7066	7566	8066	8566
16' x 32'	18' x 34'	\$ 2,072	24	612	7071	7571	8071	8571
16' x 34'	18' x 36'	\$ 2,192	24	648	7072	7572	8072	8572
16' x 36'	18' x 38'	\$ 2,299	26	684	7073	7573	8073	8573
16' x 38'	18' x 40'	\$ 2,322	26	720	7074	7574	8074	8574
16' x 40'	18' x 42'	\$ 2,426	26	756	7075	7575	8075	8575
18' x 36'	20' x 38'	\$ 2,449	28	760	7078	7578	8078	8578
18' x 38'	20' x 40'	\$ 2,491	28	800	7079	7579	8079	8579
18' x 40'	20' x 42'	\$ 2,617	28	840	7080	7580	8080	8580
20' x 40'	22' x 42'	\$ 2,869	28	924	7084	7584	8084	8584
20' x 41'	22' x 43'	\$ 2,930	30	946	7102	7602	8102	8602
20' x 42'	22' x 44'	\$ 3,012	30	968	7085	7585	8085	8585
20' x 44'	22' x 46'	\$ 3,141	30	1012	7086	7586	8086	8586
20' x 50'	22' x 52'	\$ 3,508	32	1144	7088	7588	8088	8588

RECTANGLES INCLUDING EXTENSION CENTER END STEPS



IMPORTANT STOCK SIZE INFORMATION:

- AQUA-XTREME Stock Rectangle covers with Center End Step will fit your pool if:
- the pool length and/or width of the **MAIN POOL** is up to 3" smaller than listed below, and a minimum of 36" of deck is available.
 - the pool length and/or width of the **MAIN POOL** is up to 3" larger than listed below, a minimum of 30" of deck is available, and the coping is 10" wide or less.
 - the length of the step is up to 6" smaller than listed below, and/or the width of the step is up to 12" smaller than listed. The length and width of the **MAIN POOL** area must match our listing below.

For Example: a 16' x 36' with 3'6 x 7' center end pool can use a 16' x 36' with 4' x 8' stock cover. Please call our Customer Support Department if you have any questions.

POOL SIZE	COVER SIZE	PRICE	SETS OF HARDWARE	SQUARE FOOTAGE	HUNTER GREEN ID#	SAPPHIRE NAVY ID #	MOJAVE BROWN ID #	STEEL GRAY ID #
14' x 28' + 4' x 8' center end (=14' x 32')	16' x 34'	\$ 1,954	26	544	7022	7522	8022	8522
16' x 32' + 4' x 6' center end (=16' x 36')	18' x 38'	\$ 2,317	28	684	7044	7544	8044	8544
16' x 32' + 4' x 8' center end (=16' x 36')	18' x 38'	\$ 2,322	28	684	7045	7545	8045	8545
16' x 34' + 4' x 8' center end (=16' x 38')	18' x 40'	\$ 2,338	28	720	7046	7546	8046	8546
16' x 36' + 4' x 8' center end (=16' x 40')	18' x 42'	\$ 2,461	30	756	7047	7547	8047	8547
18' x 36' + 4' x 6' center end (=18' x 40')	20' x 42'	\$ 2,655	30	840	7024	7524	8024	8524
18' x 36' + 4' x 8' center end (=18' x 40')	20' x 42'	\$ 2,655	30	840	7054	7554	8054	8554
20' x 40' + 4' x 8' center end (=20' x 44')	22' x 46'	\$ 3,166	30	1012	7058	7558	8058	8558

***Excludes International, Canadian, and Drop Shipments**

LOOP-LOC AQUA-XTREME MESH STOCK

NEW AQUA-XTREME MESH CUSTOM PRICE CHART

PRICES: (Prices listed are manufacturer's suggested retail)

**ALL PRICES LISTED ON THE CHART BELOW ARE FOR LOOP-LOC AQUA-XTREME
COLORS: HUNTER GREEN, SAPPHIRE NAVY, MOJAVE BROWN & STEEL GRAY**

Custom Cover Orders MUST be submitted in writing.

Special rectangular covers in approximate 3 X 3 sections, add \$.50 per square foot to Rectangular price reflected in Column 1.
Please refer to page 20 for Special Treatment pricing (such as cutouts).

HARDWARE:

LOOP-LOC In-Ground & On-Ground AQUA-XTREME Covers

- Necessary quantities of hardware are represented in all prices, which includes Standard Brass Anchors, Regular Stainless Steel Springs, Vinyl Tubular Spring Covers, Metal Installation Tool and a Storage Bag.
- When substituting Wood Deck Anchor Flanges always add the following: Approximate 5' Sections: Add \$.19 per square foot to overall square-footage price of cover. Approximate 3' Sections: Add \$.21 per square foot to overall square-footage price of cover.

COVER SIZE Square Feet	AQUA-XTREME RECTANGULAR Approx. 5 X 5	AQUA-XTREME FORMFIT Approx. 3 X 3
1 - 49	4.45	7.07
50 - 99	4.53	7.22
100 - 199	4.46	7.18
200 - 299	4.39	6.04
300 - 349	4.05	5.59
350 - 399	4.04	5.42
400 - 449	4.18	5.43
450 - 499	4.07	5.32
500 - 599	3.80	5.29
600 - 649	3.65	5.22
650 - 699	3.56	5.16
700 - 799	3.41	5.08
800 - 899	3.30	4.99
900 - 999	3.24	4.64
1000 - 1049	3.23	4.59
1050 - 1099	3.20	4.56
1100 - 1149	3.18	4.54
1150 - 1199	3.17	4.50
1200 - 1299	3.16	4.49
1300 - 1399	3.16	4.49
1400 - 1499	3.16	4.49
1500 - 1599	3.16	4.49
1600 - 1699	3.16	4.49
1700 - 1799	3.16	4.49
1800 - 1899	3.16	4.49
1900 - 2099	3.16	4.49

PLEASE SUBMIT A PRINT FOR ESTIMATES ON COVERS OVER 2,100 SQUARE FEET
*All Rectangle Covers with 10' or more of Raised Wall MUST be priced with approx. 3 x 3 sections.

CUSTOM MADE COVERS CANNOT BE RETURNED OR EXCHANGED

HOW TO CALCULATE THE PRICE OF A CUSTOM COVER

RECTANGLES & RECTANGULAR SHAPES

For Covers up to 1,200 square feet, add 2' to the length and width of the pool to determine the overall square footage of the required cover (Approx. 12" Overlap). Covers over 1,200 square feet and rectangles over 52' long, add 3' to length and width of the pool (Approx. 18" Overlap). If cover size is not an even foot measurement, round to the next closest foot, (e.g., 16'6 becomes 17' and 16'4 becomes 16' for pricing purposes). Multiply the square footage by the unit price reflected in Column 1 of the appropriate Custom Price chart (LOOP-LOC II Super Dense Mesh - page 17 for examples below)

SQUARE OR RECTANGLE COVERS

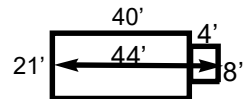
EXAMPLE: Pool Size = 15' x 35' Cover Size = 17' x 37' (add 2' to both length & width) = 629 square feet
629 s.f. x \$3.05* = \$1,918.45 List Price

EXAMPLE: Pool Size = 26' x 52' Cover Size = 29' x 55' (add 3' to both length & width) = 1,595 square feet
1595 s.f. x \$2.38* = \$3,796.10 List Price

RECTANGLE INCLUDING EXTENSION

When the step area (or extension) adds to the length of your pool, and when there is only one extension, it is considered a Rectangle Including Extension. The pool size is determined by adding the length of the extension to the overall length of the pool.

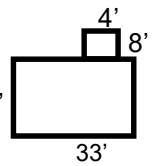
EXAMPLE: Pool Size = 21' x 44' (add the 4' step to the 40' pool length for 44' overall) Cover Size = 23' x 46' (add 2' to both length & width) = 1,058 Sq Ft.
1058 s.f. x \$2.63* = \$2,782.54 List Price



RECTANGLE PLUS EXTENSION(S)

When the step area (or extension) adds to the width of your pool, and when there is one or more extension(s), it is considered a Rectangle Plus Extension(s). In these instances, it is helpful to visualize two (or more) separate pools.

EXAMPLE: Pool Size = 17' x 33' (main) + 4' x 8' (step) Cover Size = 19' x 35' (main) + 4' x 10' (add 2' to length & width of main & width of the step) 17'
19' x 35' = 665 square feet (main) + 4' x 10' = 40 square feet (step)
665 s.f. x \$3.00* = \$1995.00(main) + 40 s.f. x \$3.42* = \$136.80 (step)
Total main + step = \$2,131.80 List Price



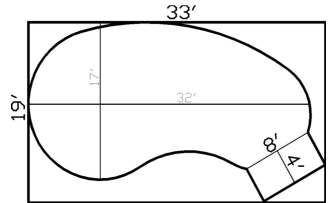
FORMFITS

For all Formfit Covers, add 3' to the length and width of the pool to determine the overall square footage of the required cover. If the cover size is not an even foot measurement, round to the next closest foot, (e.g., 16'6 becomes 17' and 16'4 becomes 16' for pricing purposes). Multiply the square footage by the unit price reflected in Column 2 of the appropriate Custom Price chart (LOOP-LOC II Super Dense Mesh - page 17 for example below)

FREE FORM

To calculate the Pool Size of a Free Form pool, fit the irregular pool shape into the smallest rectangular area. Add 3' to both the length and width of this rectangle to determine the overall Cover Size (Approx. 15" to 18" Overlap)

EXAMPLE: Pool Size = 19' x 33' Cover Size = 22' x 36' (add 3' to both length & width of the smallest rectangular area.) = 792 Sq. Ft.
792 s.f. x \$4.32* = \$3,421.44 List Price



LAZY L'S:

Must submit for pricing. Do not calculate with examples above.

LOOP-LOC ON-GROUND MESH STOCK SWIMMING POOL COVERS



PLEASE NOTE: All MESH STOCK LOOP-LOC On-Ground Safety Swimming Pool Covers only available in LOOP-LOC II Super Dense Green.

HARDWARE: Necessary quantities of hardware are represented in all prices, which includes LOOP-LOC's On-Ground Bracket Or Wood Deck Anchor Flanges (please indicate), Stainless Steel Springs, Vinyl Tubular Spring Covers, Installation Tool and Storage bag.

Prices: Prices listed below are manufacturer's suggested retail. Any cover requiring any special treatments (such as cutouts) must be priced as a non-stock (custom) item.

LOOP-LOC On-Ground can easily accommodate pools such as Esther Williams-Lady Esther, Wilkes Pools - Genesis, and Kayak's On-Ground as pictured. Will also easily accommodate all wood deck applications.

CUSTOM On-Ground Covers: Please be sure to include all deck information available, along with the name of the pool manufacturer, or refer to the "How To Calculate The Price Of A Custom Cover" above. Can be manufactured in custom designer colors.

(Note: Deck must be self supporting and pool must be surrounded by deck at least 2 feet wide; not for typical above ground pools.)

	POOL SIZE	COVER SIZE	PRICE	SETS OF HARDWARE	SHORT SPRINGS VS. LONG SPRINGS	SQUARE FOOTAGE	STRAP LENGTHS	ID #
	12' x 20'	13'6" x 21'8"	\$ 1,142	20	16 Short/4 Long	308	"A"=8', "B", "C", "D" = 20"	233
	12' x 24'	13'6" x 25'8"	\$ 1,227	22	18 Short/4 Long	364	"A"=8', "B", "C", "D" = 20"	234
	16' x 24'	17'6" x 25'9"	\$ 1,381	24	19 Short/5 Long	468	"A"=8', "B", "C", "D" = 20"	235
	16' x 28'	17'6" x 29'6"	\$ 1,518	26	21 Short/5 Long	540	"A"=8', "B", "C", "D" = 20"	290
	16' x 32'	17'6" x 33'10"	\$ 1,546	28	23 Short/5 Long	612	A"=8', "B", "C", "D" = 20"	236

LOOP-LOC II SAFETY SWIMMING POOL COVERS

SUPER DENSE MESH

CUSTOM PRICE CHART

PRICES: (Prices listed are manufacturer's suggested retail)

ALL PRICES LISTED ON THE CHART BELOW ARE FOR LOOP-LOC II SUPER DENSE MESH SPRING GREEN & DESIGNER COLORS: BLUE, TAN, BLACK & GRAY.

Custom Cover Orders MUST be submitted in writing.

Special rectangular covers in approximate 3 X 3 sections, add \$.50 per square foot to Rectangular price reflected in Column 1. Please refer to page 20 for Special Treatment pricing (such as cutouts).

HARDWARE:

LOOP-LOC In-Ground & On-Ground Super Dense Mesh Covers

- Necessary quantities of hardware are represented in all prices, which includes Standard Brass Anchors, Regular Stainless Steel Springs, Vinyl Tubular Spring Covers, Metal Installation Tool and a Storage Bag.
- When substituting Wood Deck Anchor Flanges always add the following: Approximate 5' Sections: Add \$.19 per square foot to

COVER SIZE Square Feet	GREEN MESH RECTANGULAR Approx. 5 X 5 Column 1	GREEN MESH FORMFIT Approx. 3 X 3 Column 2	DESIGNER COLORS RECTANGULAR Approx. 5 X 5 Column 1	DESIGNER COLORS FORMFIT Approx. 3 X 3 Column 2
1 - 49	3.42	5.45	3.59	5.71
50 - 99	3.49	5.18	3.66	5.44
100 - 199	3.48	5.01	3.64	5.25
200 - 299	3.47	4.88	3.63	5.13
300 - 349	3.39	4.61	3.56	4.83
350 - 399	3.38	4.60	3.55	4.82
400 - 449	3.51	4.77	3.69	5.01
450 - 499	3.27	4.62	3.44	4.86
500 - 599	3.21	4.50	3.37	4.73
600 - 649	3.05	4.50	3.20	4.73
650 - 699	3.00	4.35	3.14	4.56
700 - 799	2.85	4.32	2.99	4.53
800 - 899	2.76	4.12	2.89	4.32
900 - 999	2.65	3.93	2.78	4.14
1000 - 1049	2.64	3.92	2.77	4.13
1050 - 1099	2.63	3.91	2.76	4.10
1100 - 1149	2.60	3.89	2.74	4.06
1150 - 1199	2.58	3.87	2.72	4.05
1200 - 1299	2.52	3.86	2.66	4.04
1300 - 1399	2.48	3.84	2.60	4.03
1400 - 1499	2.40	3.83	2.52	4.02
1500 - 1599	2.38	3.82	2.50	4.01
1600 - 1699	2.34	3.81	2.45	4.00
1700 - 1799	2.29	3.79	2.40	3.98
1800 - 1899	2.26	3.77	2.37	3.96
1900 - 2099	2.15	3.47	2.26	3.62

PLEASE SUBMIT A PRINT FOR ESTIMATES ON COVERS OVER 2,100 SQUARE FEET

***All Rectangle Covers with 10' or more of Raised Wall MUST be priced with approx. 3 x 3 sections.**

CUSTOM MADE COVERS CANNOT BE RETURNED OR EXCHANGED

LOOP-LOC
CUSTOM

ULTRA-LOC III SOLID - CUSTOM

Solid Coated PVC with Rip Stop Scrim Swimming Pool Covers With Mesh Drain Panels
 Solid Coated PVC with Rip Stop Scrim Swimming Pool Covers No Drain Panels-only sold w/Automatic Pump
 Automatic Cover Pump Large Capacity is sold with cover at an additional Retail Price of \$291.00.

PRICES: (Prices listed are manufacturer's suggested retail) ALL PRICES LISTED ON THE CHART BELOW ARE FOR ULTRA-LOC SOLID III GREEN & DESIGNER COLORS: BLUE, TAN & GRAY.

Custom Cover Orders MUST be submitted in writing.

Prices listed are manufacturer's suggested retail and include necessary quantities of standard hardware as listed below. Rectangular ULTRA-LOC III Solid manufactured in approximate 5 X 5 sections. Special rectangular covers in approximate 3 X 3 sections, add \$.50 per square foot and for 4 x 4 sections, add \$.25 to Rectangular price reflected in Column 1. Please refer to page 20 for Special Treatment pricing (such as cutouts).

HARDWARE:

- Necessary quantities of hardware are represented in all prices, which includes Standard Brass Anchors, Regular Stainless Steel Springs, Vinyl Tubular Spring Covers, Metal Installation Tool and a Storage Bag.
- When substituting Wood Deck Anchor Flanges always add the following: Approximate 5' Sections: Add \$.19 per square foot to overall square-footage price of cover. Approximate 3' Sections: Add \$.21 per square foot to overall square-footage price of cover.

COVER SIZE Square Feet	GREEN SOLID RECTANGULAR Approx. 5 X 5 Column 1	GREEN SOLID FORMFIT Approx. 3 X 3 Column 2	DESIGNER COLORS RECTANGULAR Approx. 5 X 5 Column 1	DESIGNER COLORS FORMFIT Approx. 3 X 3 Column 2
1 - 49	4.37	6.94	4.59	7.29
50 - 99	4.43	7.08	4.65	7.43
100 - 199	4.38	7.04	4.60	7.39
200 - 299	4.31	5.92	4.53	6.22
300 - 349	3.97	5.48	4.17	5.75
350 - 399	3.96	5.30	4.16	5.57
400 - 449	4.13	5.38	4.34	5.65
450 - 499	4.03	5.27	4.23	5.53
500 - 599	3.76	5.24	3.95	5.50
600 - 649	3.62	5.20	3.80	5.46
650 - 699	3.53	5.12	3.71	5.38
700 - 799	3.39	5.05	3.56	5.30
800 - 899	3.29	4.98	3.45	5.23
900 - 999	3.24	4.62	3.40	4.85
1000 - 1049	3.23	4.57	3.39	4.80
1050 - 1099	3.20	4.54	3.36	4.77
1100 - 1149	3.17	4.50	3.33	4.73
1150 - 1199	3.16	4.48	3.32	4.70
1200 - 1250	3.14	4.47	3.30	4.69
1251 - 1600	3.14	4.47	3.30	4.69
1601 - 2099	3.14	4.47	3.30	4.69

IMPORTANT: All ULTRA-LOC III SOLID Pool Cover Owners - If your ULTRA-LOC III Solid Cover has no drains an automatic cover pump will be included (at an additional cost) with your cover. No pump is included with the ULTRA-LOC III Solid cover with mesh drain panels. Please be aware that in both cases, drains or no drains, any standing water (rain or melting snow), must be pumped off immediately with a weighted cover pump in order to maintain safety features. ULTRA-LOC III Solid Formfit Covers with drains from 600 - 1000 square feet include 3 drain panels. All ULTRA-LOC III Solid Formfit Covers with drains over 1000 square feet may require additional drains at an upcharge depending upon shape of pool. ULTRA-LOC III Solid Rectangle Covers may require additional drains at an upcharge based on shape and size of pool.

Any ULTRA-LOC III Solid cover over 2000 sq. ft. may require special treatments.

CUSTOM MADE COVERS CANNOT BE RETURNED OR EXCHANGED

ULTRA-LOC SOLID
CUSTOM

HARDWARE PRICE TABLE

LOOP-LOC
HARDWARE

10" Comfort Grip 1/4" Hex Driver with Ball Tip (H564).....	\$ 35.15
18" Hex Anchor Screw Key (HEXK)	\$ 4.27
Aluminum Tamp Tool (TAMP).....	\$ 4.27
Automatic Cover Pump (PUMP2)	\$ 317.24
AQUA-LOC Zipper Kit (H668)	\$ 427.19
Includes:1 stainless steel slider, 2 stainless steel cable locks, 2 keys and 2 aluminum blocks.	
Brass Anchors (ANCH).....	\$ 6.15
Brass Anchor Extractor Tool (H563).....	\$ 189.26
Cable - 7/32" Stainless Steel (per foot)	\$ 4.18
Cable Kit (CAKIT).....	\$ 101.66
Includes:1 stainless steel turnbuckle, 4 stainless steel u-bolts, 1 extra long anchor, 1 anchor, 1 anchor collar, 2-1' tubing.	
Cable Wall Anchor - Stainless Steel (CAANC)	\$ 21.09
Cable Wall Anchor 6" Long - Stainless Steel for Facade Walls (H711).....	\$ 25.42
Cable Wall Anchor Extra Long - Stainless Steel for Replacement of Eyebolt (H705).....	\$ 21.09
Cable Wall Anchor Decorative Cap (pkg of 10) (H793).....	\$ 12.44
Coping Protector Covers (H796).....	\$ 5.40
Deck-Loc Anchors (with cover purchase only) (H1461).....	\$ 27.85
Dive Stand Kit (DIVE).....	\$ 42.18
Extra Long Brass Anchor (H652)	\$ 12.16
Image-Loc Kit with Camera (1012)	\$ 388.79
Installation Tool – Steel (MROD).....	\$ 30.28
Masonry Anchor Collar – Brass (each) (MAC)	\$ 2.33
On-Ground Brackets (each) (ALUMADJ).....	\$ 21.47
When ordering Custom On-Ground Covers with Brackets - add \$13.25 per bracket	
On-Ground Installation Tool (ONGTOO).....	\$ 15.69
Pad Patch Kit Gray - (3) 4"x8" adhesive patches for pads (PAT1472).....	\$ 39.96
Patch Kit Green - (3) 4"x8" adhesive patches for Green Mesh and Ultra-LOC.....	\$ 26.99
Patch Kit Designer Colors - (3) 4"x8" adhesive patches for Mesh and Ultra-LOC Colors.....	\$ 28.07
Pipe – Aluminum (9") with Brass Anchor Included (PIPE9).....	\$ 11.20
Pipe – Aluminum (15") with Brass Anchor Included (H1050).....	\$ 13.36
Pipe – Aluminum (18") with Brass Anchor Included (PIPE18).....	\$ 14.44
Stainless Steel Anchors (H1069).....	\$ 21.58
Stainless Steel Buckles (BUCK).....	\$ 2.33
Stainless Steel Masonry Anchor Collars (H1070).....	\$ 15.14
Stainless Steel Springs - Regular (with covers) (SPRG)	\$ 14.01
Stainless Steel Springs - Short** (with covers) (SSPRG).....	\$ 13.14
Stainless Steel Springs - Commercial Grade (with covers) (H1072).....	\$ 19.30
Storage Bag	\$ 42.18
"Undr Covr" Padding Black (30" W x 22' L).....	\$ 74.62
Wood Deck Anchor Flanges (each) (WDAF).....	\$ 8.63
Wood Deck Anchor Drill Bit (H1240).....	\$ 258.48
Tennis Windscreen Polypropylene Material (custom order).	
6' Wide	\$2.05 Per Square Foot
9' Wide	\$3.05 Per Square Foot

** Covers must not be installed with opposing or more than 50% short springs in order to be warranted for safety. **

LOOP-LOC MESH, LOOP-LOC ON-GROUND & ULTRA-LOC III SOLID

SPECIAL TREATMENT PRICE TABLE

AQUA-LOC ZIPPER TREATMENT

Up to 12' in length - \$31.00 per ft + \$395.00 Zipper Kit
Over 13' in length - \$45.00 per ft + \$395.00 Zipper Kit

BOW ENDS OR WEDGE SHAPE (Not Exceeding 6 feet)

Bow Ends: \$85.00 for each end
Wedges: \$115.00 for each side

• Please Note: If a bow or wedge exceeds 6', send a print for an exact estimate. Any corner over a 4' radius must be cut to maintain warranty.

CABLE-LOC RAISED WALL SAFETY BARRIER: (Patent Pending)

\$45.50 per foot + \$101.60 Cable Kit - minimum 4' charge.

Includes: Cable, Cable-Loc Safety Barrier, Heavy Duty O-Rings and Stainless Steel Wall Anchors plus Kit.

• Please Note: Loop-Loc cable and kit must be purchased to maintain warranty. • All solid covers with drains & cable raised wall require additional drain panels. • Rectangle with 10' or more raised wall must be manufactured with 3' x 3' sections.

CUTOUTS (LADDERS, HANDRAILS, SLIDES, etc.)

\$98.50 each

• Please Note: Plans and photos are required to determine cost of raised bond beams, waterfalls, or other irregularities.

DRAIN PANELS (Additional)

\$169.00 each

Certain pools due to size and/or shape will require additional drain panels, e.g., Cable-Loc raised wall.

• Please Note: All Lazy 'L' pool covers will require at least 1 - 2 additional drain panels.

PADS

All covers that require more than 4 pads will be charged \$45.00 for each additional pad.

• Please Note: Spa Treatments and special pads not included.

PVC PADS

Recommended for extra protection of sharp coping areas. \$92.00 per pad.

SPECIAL RECTANGLE COVERS

(Rectangular shaped covers made with approximate 3' x 3' sections.)

Add \$.50 per square foot to the Rectangular price reflected in **Column 1** on the LOOP-LOC II Super Dense Mesh Custom Price Chart, page 17, the Aqua-Xtreme Custom Price Chart, page 15 and the ULTRA-LOC III SOLID Custom Price Chart, page 18.

SPA TREATMENTS

Spa Wall Flush with pool deck, No Spillway - Chafe Only.....	\$ 49.00
Spa Wall Flush with pool deck with an Open Spillway, One Pad & Chafe.....	\$ 69.00
Spa Wall Lower than pool deck, No Spillway, Two Pads and Chafe.....	\$ 98.00
Spa Wall Lower than pool deck with an Open Spillway 18" wide or less, Three Pads & Chafe.....	\$111.00

UP AND OVER up to 9" (over 9" use Protect-A-Gap treatment below)

\$97.00 per step

Includes: GAP-GUARD, 60 gauge PVC padding and additional overlap in this area.

• Please Note the following limits: The maximum step height is 9" and the steps must be at least 1' apart.

PROTECT-A-GAP TREATMENT (for raised obstructions higher than 9" rise)

9" - 11" rises	\$206.00 each rise
12" - 14" rises	\$245.00 each rise
15" - 17" rises	\$291.00 each rise
18" - 20" rises	\$326.00 each rise
21" - 23" rises	\$358.00 each rise
24" rise.....	\$392.00 each rise

ALSO AVAILABLE: Debris Containment & Privacy Screens & other Custom Industrial Fabric Applications

REPAIR & REPLACEMENT POLICY

REPAIRS:

1. LOOP-LOC will repair your Safety Pool Covers at any time during the year - including peak season.
2. No repair will be performed without your approval.
3. Upon Approval, LOOP-LOC guarantees that repaired cover will be shipped in 3 weeks or less.
4. Inspection and handling fee: If a cover is returned to Loop-Loc for possible repair or replacement and is asked to be returned "No Work Done", a one-time \$96.00 inspection and handling fee will be charged. This is to cover the checking in of the cover, entering into our system, thoroughly inspecting, measuring, drawing up the repair, quoting and storing. Please be sure to notify your customer of this charge.

BEFORE SHIPPING THE COVER IN FOR REPAIR:

- Clean & Dry Cover prior to shipping
- Remove all Springs from Cover to prevent further damage when shipping, and reduce the shipping weight. We cannot repair covers with springs attached, if springs are left on we will add \$75.00 spring removal to your repair charge.
Include: Your Company Name, Contact Name, Dealer Code, and your Customer Name. Also include any information required to perform the repair.

REPLACEMENT COVER RETURNS (Loop-Loc or Non-Loop-Loc Covers):

1. Loop-Loc can supply you with a prepaid return label to return covers that need to be replaced when no original order number can be found or for non-Loop-Loc covers.
2. The shipping to Loop-Loc of covers under 150 lbs. and a total girth under 128 inches will be "Free" with the pre-paid shipping label, all springs are removed, you have a return authorization#, and a replacement cover is ordered.
3. Call Customer Support for your prepaid label and return authorization #
4. Fill out the merchandise return form and attach to the cover.
5. Remove all springs prior to shipping to reduce the shipping weight and avoid a \$75 spring removal fee.
6. Once the replacement order is confirmed we will then manufacture the cover in 10 business days or less and ship the cover back.
7. Freight fees will be charged on the return of the new replacement cover. Freight fees will also be charged if you request to also have the "old" cover returned.

*If you do not order a replacement cover Loop-Loc will charge your account back the free freight offer that we supplied with the inbound shipping. Freight fees to return the old cover back to you, if requested, will apply.

BABY-LOC Removable Fencing

SCHEDULE OF RETAIL PRICING

All BABY-LOC fence units include: fence, aluminum poles, latches, and neutral colored deck sleeves with matching deck caps. Fence sections are available in 20', 10' and 5' lengths for easier customization. All sections have standard pole spacing of 30" on center. Gates MUST be assembled on site.

INSTALLATION REQUIREMENTS: 1 1/4" core drill bit must be used for deck sleeve. 1 1/2" core drill bit must be used for 14" aluminum pipe.



BABY-LOC WITH ALUMINUM POLES

(includes all necessary hardware)

4' HIGH FENCE SECTIONS	5',10',20'.....	\$ 16.33 per ft. / retail
5' HIGH FENCE SECTIONS	5',10',20'.....	\$ 17.10 per ft. / retail

OPTIONAL Magna-Latch Self-Closing Gate

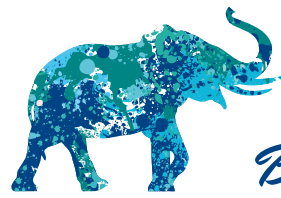
4' HIGH, 30" Wide Gate (Self-Closing, Self-Latching)	\$ 598.43
5' HIGH, 30" Wide Gate (Self-Closing, Self-Latching)	\$ 660.23

Additional Hardware for BABY-LOC

Aluminum Pole w/cap (4'5").....	\$ 9.02	Core Drill Bit 1 1/2" for Aluminum Pipe.....	\$ 210.89
Aluminum Pole w/cap (5'4).....	\$ 9.55	Cove molding.....	\$ 13.00
Binding (24' roll).....	\$ 22.81	Deck Sleeve w/cap.....	\$ 6.10
Black Screw (Bag of 10)#8 5/8".....	\$ 3.72	Double Ended Latch.....	\$ 7.84
Brass Eyelets.....	\$.98	"O" Rings (Bag of 10).....	\$ 3.24
Caps (for poles).....	\$ 1.85	Pipe (14" Aluminum pipe for deck sleeve).....	\$ 10.55
Core Drill Bit 1 1/4" for Deck Sleeve.....	\$ 210.89	Template.....	\$ 35.69

DEALERS - See Dealer Discount Schedule for Pricing

Introducing



LOOP-LOC[®]
Backyard Accents

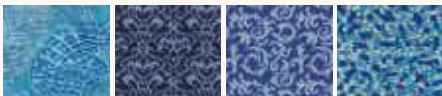
POOLSIDE LUXURY LIVING

Pattern shown:
Bella Vista

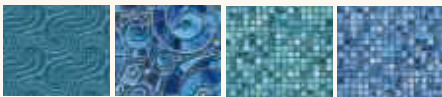
Pillow Covers

Add a designer look and brilliant color with our elegant and luxurious cushion covers.

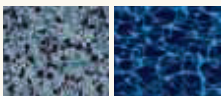
Available to match these
Luxury Liner patterns*



Palm Springs Bella Vista Acqua Blu Beachglass



Azura Maya Pacifica Oceania

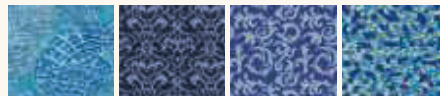


Camino Lagoon Indigo Seas

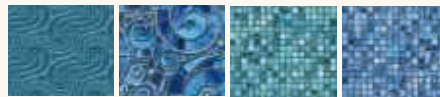
Pool & Beach Towel

This sumptuously soft and beautifully designed towel will elevate your outdoor décor. Plush and luxurious on one side and ultra-absorbent on the other.

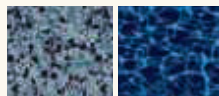
Available to match these
Luxury Liner patterns*



Palm Springs Bella Vista Acqua Blu Beachglass



Azura Maya Pacifica Oceania

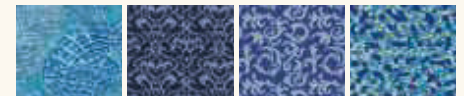


Camino Lagoon Indigo Seas

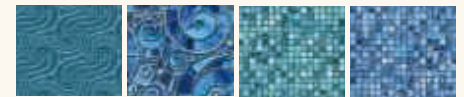
Float Cover

Beautify and enhance your outdoor style with a designer float cover. Pool foam floats, new or old, will instantly look sleek and customized with this easy zip-on cover.

Available to match 10 of these
Luxury Liner patterns*



Palm Springs Bella Vista Acqua Blu Beachglass



Azura Maya Pacifica Oceania



Camino Lagoon Indigo Seas Neon Green Cabana Blue/White Stripe



*Look for the Backyard Accents logo on the following pages for eligible product patterns.

Visit backyardaccents.com for more information

IMAGE-LOC PRICE GUIDE

"IMAGE-LOC" the revolutionary way to photo measure safety cover orders for residential and commercial swimming pools. Never A-B again! One person, one camera, and following simple instructions will achieve highly accurate cover measurements. This proprietary and revolutionary process brought to you by LOOP-LOC will only take 10-15 minutes to achieve.



Visit our dealer center at www.looploc.com/dealers - sign in - and view the "IMAGE-LOC" video now. There has never been a better, faster and more reliable way to measure your commercial swimming pools.

IMAGE-LOC PRICING INSTRUCTIONS

Estimate & Orders: \$55.00 processing fee

Replacement Covers: \$55.00 processing fee

Commercial Pools Estimates or Orders: \$200 processing fee

****Important Please Note:** Image-Loc is a dealer tool to save you time and money in the field. However due to the intricate nature of this process once it is sent to Loop-Loc - estimates and pricing will take a few days to complete. It is recommended to use our quick pricing tool in the Loop-Loc Dealer Center for Estimates, and complete the Image-Loc process for Orders.



www.looploc.com | 1-800-LOC-LOOP



Now you can customize your pool cover with a statement that's all about you with LOGO-LOC. Want to personalize your cover by adding family, favorite destinations, pets, monograms? Send a photo. Want to promote your hotel, brand, condominium, business? Send us your logo. Thanks to LOGO-LOC, your pool will draw attention to whatever you want to showcase.

LOGO-LOC



- + CUSTOMIZE YOUR POOL COVER WITH A HI-RES IMAGE OF AT LEAST 300 DPI
- + MONOGRAMS, PICTURES, SCENES COMPANY LOGOS ACCEPTED
- + MAXIMUM LOGO IMAGE AREA: 16' (W) X 150' (L)
- + TWO-PIECE LOGOS WELCOMED

Submit drawing with logo size for pricing.

LOOP-LOC GREEN SOLID STOCK SPA COVER PROTECTOR CAP

Snow, Ice, Leaves, Dirt & Debris...all have damaging effects on your expensive hard top spa cover. Protect your investment whenever your spa is closed during the Winter Months, with Loop-Loc's Spa Cover Protector Cap. **LOOP-LOC'S Spa Cover Protector Cap** is manufactured using the same high quality green polypropylene materials as in our safety pool covers. Elasticized for a snug fit, 12" apron, and polypro loops sewn to cover; lets you securely weave your closure straps through to keep the cover firmly in place. Neatly packed in storage tote for convenience.



SPA SIZE	GREEN STOCK	ID#
6 X 7	\$149.00	901
7 X 7	\$161.00	902
7 X 8	\$171.00	903
7'6 X 7'6	\$176.00	904
8 X 8	\$180.00	905

Designer Colors & Custom sizes available through special order.

2021 LUXURY LINERS

IN-GROUND LINER PRICE SHEET

<u>Square Feet</u>	<u>20 MIL</u>
100 - 349	4.79
350 - 449	4.56
450 - 549	4.21
550 - 799	4.17
800 - 1199	3.99
1200 - 2099	3.87

PLEASE SUBMIT A PRINT FOR ESTIMATES ON LINERS OVER 2,100 SQUARE FEET

ADDITIONAL IN-GROUND TREATMENT CHARGES

<p>Freeform..... Add 15%</p> <p>28 Mil Upcharge..... Add 30%</p> <p>28 Mil Wall with 20 Mil Bottom..... Add 10%</p> <p>20 Mil Wall with 28 Mil Bottom..... Add 20%</p> <p>PearlEssence / Aqua Shift..... \$ 195.00</p> <p>Embossed Patterns 28 Mil..... \$ 699.00</p> <p>All Print \$ 198.00</p> <p>Add to Wall > 42" \$ 78.00</p> <p>Cut Down Wall < 40".....\$ 67.00</p> <p>Depths Greater Than 9' \$ 168.00</p> <p>Drain Circles 7" (Pack of 2).....\$ 10.00</p> <p>Flat BottomLess... \$ 45.00</p> <p>Irregular Custom Treatments & Steps..Submit for price</p> <p>Liner-Loc (Rigid 4' length, custom colors) \$ 8.00</p> <p>Non-Standard Pool Floor..... \$ 219.00</p> <p>Roman End \$ 71.00</p> <p>Safety Ledge \$ 62.00</p>	<p>Straight Slope \$ 193.00</p> <p>8' Bench \$ 253.00</p> <p>10' Bench \$ 316.00</p> <p>12' Bench \$ 344.00</p> <p>16' Bench \$ 396.00</p> <p>8' Vinyl Covered Step..... \$ 406.00</p> <p>10' Vinyl Covered Step..... \$ 458.00</p> <p>12' Vinyl Covered Step..... \$ 560.00</p> <p>16' Vinyl Covered Step..... \$ 671.00</p> <p>Over 16' Vinyl Covered Step..... \$ 760.00</p> <p>Textured Pattern Step/Bench \$ 108.00</p> <p><small>*In addition to the step/bench charge.</small></p> <p>Wedding Cake Step (up to 8') \$ 689.00</p> <p>Wedding Cake Step (over 8') \$ 783.00</p> <p>Wedding Cake Step (over 16').....\$ 900.00</p> <p>3 Year Silver Extended Warranty \$ 35.00</p> <p><small>*Optional Extended Service Contract.</small></p> <p>*5 Year Gold Extended Warranty\$ 65.00</p> <p><small>*Optional Extended Service Contract.</small></p>
--	--

HOW TO CALCULATE THE PRICE OF A LINER:

1. Determine the actual square footage of the pool.
2. Multiply the square ft. by the price in the above column.
3. Calculate any % upcharge on the base price. For example: add 15% for Freeform, etc.
(Note - if there is more than one, calculate each % charge separately using base price.)
4. Then add any additional treatment charges required.

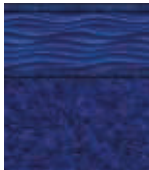
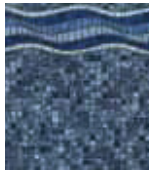













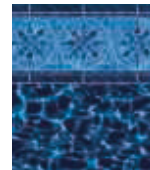
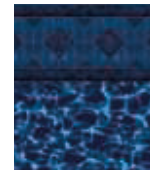

LINER PRICE = Base Price + each % upcharge + Treatments

**For accurate pricing please submit all information with pool drawing.

LINERS CANNOT BE RETURNED OR EXCHANGED

DISCOUNTED SHIPPING RATES WILL APPLY IN 2021





The one, the only LOOP-LOC: No one offers more Exclusive Luxury Liner Designs. Artistically designed and meticulously manufactured, LOOP-LOC Luxury Liners' spectacular selection of exclusive patterns is truly a breed apart. To see all our elegant designer patterns, call for a brochure or visit looploc.com.

							
ANTIGUA w/Cobalt Kontiki Available in 20 & 28 mil.	BALI w/Mosaic Ocean Available in 20 & 28 mil.	BARBUDA w/Cobalt Kontiki Available in 20 & 28 mil.	BENGAL BAY w/Lapis Quartz Available in 20 & 28 mil.	BIMINI ISLE w/Marine Sparkle Available in 20 & 28 mil.	BOULDER BEACH Available in 20 & 28 mil.	CAMBRIDGE w/Desert Sand Available in 20 & 28 mil.	CAPRI w/Blue Grotto Available in 20 & 28 mil.
							
CARIBBEAN TEAL Available in 20 & 28 mil.	HAMPTON BLUE w/Blue Beach Pebble Available in 20 & 28 mil.	MANDALA w/Lapis Quartz Available in 28 mil.	MESSINA w/Aegean Sea Available in 20 & 28 mil.	MYKONOS w/Blue Beach Pebble Available in 20 & 28 mil.	NANTUCKET ISLE w/Indigo Seas Available in 20 & 28 mil.	OCEAN REEF w/Marine Sparkle Available in 20 & 28 mil.	RAVELLO w/Aegean Sea Available in 20 & 28 mil.
							
RIVER ROCK Available in 20 & 28 mil.	SAG HARBOR w/Blue Beach Pebble Available in 20 & 28 mil.	SAMOS w/Aegean Sea Available in 20 & 28 mil.	SANTA FE w/Mosaic Ocean Available in 20 & 28 mil.	SAN SEBASTIAN w/Slate Mosaic Available in 28 mil.	STELLA MARIS w/Indigo Seas Available in 20 & 28 mil.	STONEHAVEN w/Indigo Seas Available in 20 & 28 mil.	VERNAZZA w/Slate Mosaic Available in 28 mil.


PearlEssence™ Exclusively from LOOP-LOC

				
OCEANIA Available in 20 & 28 mil.	PACIFICA Available in 20 & 28 mil.	PLATINUM ONYX Available in 28 mil.	QUARTZ FLAGSTONE Available in 28 mil.	CAMINO LAGOON Available in 28 mil.

Embossed Collection

			
SHIMMERING SEAWAVES PearlEssence Available in 28 mil.	MIDNIGHT SLATE PearlEssence Available in 28 mil.	ROYAL NAVY GLISTENING PALMS PearlEssence Available in 28 mil.	STERLING CAVIAR Available in 28 mil.

Aqua Shift

	
HONU w/Granite Blue Available in 28 mil.	MAHALO w/Granite Blue Available in 28 mil.

Boutique Collection

						
ACQUA BLU Available in 20 & 28 mil.	AZURA Available in 20 & 28 mil.	BEACH GLASS Available in 20 & 28 mil.	BELLA VISTA Available in 20 & 28 mil.	MAYA Available in 20 & 28 mil.	PALM SPRINGS Available in 20 & 28 mil.	TIMELESS Available in 20 & 28 mil.

All patterns available in textured for pool steps. For the most accurate color match, contact LOOP-LOC to request their liner sample case. For more information, visit looploc.com or call 1-800-LOC-LOOP.

© LOOP-LOC 2021. Made in the USA.

2021

THE ONLY HOLE IN YOUR DECK SHOULD BE YOUR POOL



Introducing DECK-LOC™

The first NO-DRILL anchor system for composite decks.



For more information, visit looploc.com or call 1-800-LOC-LOOP.

© LOOP-LOC 2019. Made in the USA. Patent pending under U.S. Patent application 16/200,929.

