



**Essential  
Elements**

*swimming pool chemicals*

# Consumer Reference Guide



**Imperial**  
**POOLS INC.**  
REDEFINING ONE SOURCE



# About Imperial

## Our History

Imperial Pools, Inc. was founded in 1959 as a small retail company owned by the Maiuccoro family. Under the leadership of President and Owner John Maiuccoro, the company now employs over 350 people in 10 locations. Our manufacturing facility is located in Latham, NY where we manufacture and distribute some of the best known brands in the packaged swimming pool and spa industries.

## Our Product Lines Include:

- In-ground Steel and Polymer Pools
- Steel and Polymer Stairs/Benches/Coves/Sundecks
- In-ground and Aboveground Interior Pool Finishes
- Thermoplastic Steps
- Thermoformed Acrylic Portable Spas
- Swimming Pool Chemicals
- Full Line of Distributed Products
- Pumps, Filters, Heaters and Cleaners

## Our People

What separates us from our competition is our people. ***We truly are pool people.*** Our Executive Staff all have over 30 years of expertise in the industry; our Department heads all average over 25 years; and our average employee has been with the company for over 15 years. That knowledge and expertise is unmatched!



## TM

**Testing Materials:** The starting point for great water quality is great testing habits. Water should be checked two times per week for available sanitizer level and proper pH readings. A water sample should be brought to your professional dealer for full analysis once per month. The first sample should be taken 24 hours after opening the pool and the last sample taken 48 hours before closing the pool for the season. Of course, any time you suspect a problem, a water sample should also be checked.

## B

**Balance the Water:** The critical first step in maintaining clear, safe, and enjoyable water is overall balance.

- **Alkalinity** gives water the ability to resist pH changes due to rain and other external factors.
- **Calcium Hardness** prevents water from becoming aggressive and breaking down metal and plastic components thus protecting all surfaces, structures, and equipment.
- **Chlorine Stabilizer** slows chlorine loss due to sunlight. An unstabilized pool will use three to four times more chlorine than a properly stabilized pool.
- **Hello Softwater (borate)** enhances water quality. The water takes on a softer feel, chlorine consumption is reduced, water balance is more controllable, and algae growth is diminished.

## A

**Adjust the Water:** The pH of human tissue is 7.5 and the recommended range for pools and spas is 7.2 to 7.8. Test twice per week and adjust as needed. pH Increaser will increase pH to the proper level and pH Decreaser will decrease pH to the proper level.

## S

**Sanitize:** Water requires a continuous supply of Sanitizer to kill bacteria and algae before it has a chance to get established in the pool or spa. In traditional chlorine applications, sanitizer should be introduced through the use of an automatic chlorinator for consistent, effective disbursement throughout the water.

## O

**Oxidize:** Oxidizing is chemically cleaning the water once per week. It has several common names including “shocking” and “super chlorinating”. Oxidizing removes the materials that were killed by the sanitizer. Without oxidizing, contaminants build up and lead to water that is difficult to control and is of poor quality.

## C

**Control Algae and Minerals:** Weekly use of products to control minerals and prevent algae will reduce the work load on Sanitizers and Oxidizers. Proper weekly additions keep pool and spa water sparkling clear, easy to maintain, and safe and enjoyable to use. Pools using algaecides weekly will exhibit better water quality and less product consumption than those not preventing algae formation.

## PM

**Problem Solvers and Maintenance:** This specialized group of products is used to treat rare circumstances that may arise in pool water from time to time. These products kill certain types of stubborn algae, remove excess chlorine, eliminate phosphates that algae feed on, and a host of other important tasks.

# Opening Your Pool

- 1** Carefully remove all debris from the pool cover and around the pool area. Things such as leaves, dirt, debris, and other organic materials will encourage algae growth and slow the chemistry opening process if allowed to enter the pool water.
- 2** If required, remove the water on the cover. Cover water, if relatively clear, can be placed into the pool to keep the level. If you prefer to discard the cover water, the pool **MUST** be refilled at the same rate that you drain the cover. Water is very heavy, with each gallon weighing over 8 lbs. Removing a lot of water removes a lot of weight and can compromise the pools structure. Consult you pool dealer or manufacturer for specifics.
- 3** With the pool full, remove the cover. Clean the cover and allow to dry. Store the cover in a solid plastic container, such as a heavy duty trash can, and always use some type of rodent deterrent to prevent them nesting in the cover during the pool season.
- 4** Remove all plugs and skimmer protection while installing directional(s) and skimmer basket(s). Assemble the equipment by placing a clean basket in the pump. Re-install all plugs and gauges on the equipment and reconnect any disassembled pipes. Fill the pump basket (housing) with water and install the pump lid. Turn the pump on and wait for the water to begin circulating. There are many types of equipment out there so consult you pool dealer or the equipment manufacturer's owner's manual for specific detailed instructions.
- 5** Brush or vacuum the entire pool to loosen algae and remove debris.
- 6** After the pool has run for 4 hours, apply 1 pound of **Preve-Shock Plus** and 16 Oz of **Preve-Cide 60 Plus** per 10,000 gallons of pool water and allow to circulate for 24 hours.
- 7** Collect a water sample 18" below the water's surface and away from inlets. Use an approved water sample container. If one is not available an empty bottled water container is acceptable. Take the sample to your pool professional for testing and balancing. Follow the instructions on the water analysis print out to balance and protect your pool. Repeat this process throughout the season.



# IT'S PREVE-TIME!

## The Weekly Pool Maintenance Program

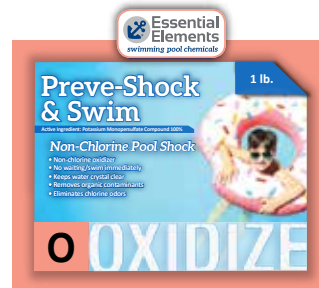
### S SANITIZE

Sunday Evening  
Pick One to Chlorinate:



### O OXIDIZE

Sunday Evening  
Pick One to Shock:



### C CONTROL

Monday Morning  
Pick One to Prevent Algae:



## THE BUILDING BLOCKS OF WATER CARE!

Use these 3  
and enjoy our  
Green Algae-Free  
Guarantee!



# Green Algae Free Guarantee

## Qualifying Parameters:

- 1** Must have dealer water analysis less than 30 days old
- 2** Algae must be green algae in the water (excludes mustard strains)
- 3** Must provide a picture of the pool
- 4** Must meet balancing criteria:
  - a) pH: 7.2-7.6
  - b) Alkalinity: 110-150 ppm
  - c) Calcium: 200-400 ppm
  - d) Stabilizer: 30-50 ppm
- 5** Must use **Preve-Tab 4 in 1**, **Preve-Cide 60 Plus**, and either **Preve-Shock Plus** or **73% Cal Hypo** weekly.



## Actions on Claims:

- 1** Consumer returns to store where purchased with a water sample
- 2** Dealer confirms water test parameters are close
- 3** Dealer supplies consumer with 3 bags of **Preve-Shock Plus** or **73% Cal Hypo** per 10,000 gallons
- 4** Dealer supplies **Preve-Cide 60 Plus** at the rate of 16oz per 10,000 gallons (1qt Minimum)
- 5** Dealer submits a claim form for the homeowner with the required documents
- 6** Limit one claim per consumer every 24 months.



# My Pool Profile

Customer Name: \_\_\_\_\_

Dealer:

**Pool Type:**     Inground     Aboveground     On-Ground     Seasonal/Inflatable

**Pool Finish:**     Vinyl     Plaster/Gunite     Fiberglass     Other

**Builder/Installer:** \_\_\_\_\_ **Year Built:** \_\_\_\_\_

**Pool Size:** \_\_\_\_\_ x \_\_\_\_\_ **Pool Shape:** \_\_\_\_\_

**Gallons:** \_\_\_\_\_ L x W x Average Depth x 7.5 (x 8 for sloped inground pools) = Volume

**Filter Brand:**     Hayward     Pentair     Sta-Rite     Jandy     Other \_\_\_\_\_

**Type:**     Sand     Zeosand     Glass     DE     Cartridge

**Pump Brand:**     Hayward     Pentair     Sta-Rite     Jandy     Other \_\_\_\_\_

**Size:**    HP \_\_\_\_\_     Variable Speed    **Schedule:** \_\_\_\_\_

**Heater Brand:**     Hayward     Pentair     Sta-Rite     Jandy     Other \_\_\_\_\_

**Type:**     Propane     Natural Gas     Heat Pump     Other \_\_\_\_\_

**Sanitizer:**     Preve-Tab 4 in 1 Complete     Preve-Tab     Preve-Stick

Salt Chlorine Generator    **Manufacturer:** \_\_\_\_\_

**Oxidizer:**     Preve-Shock Plus     Preve Shock & Swim     73% Cal Hypo

**Algaecide:**     Preve-Cide 60 Plus     Preve-Cide 30 Plus     Preve-Cide Quat

Preve-Cide Copper     Preve-Cide Max

**Options:**     Waterfall     Spill Over Spa     Deck Jets     Bubblers

Auto Cleaner Manufacturer and Model: \_\_\_\_\_

Other: \_\_\_\_\_

# Preve-Time Maintenance Schedule

## Maintain Chlorine Level:

Use \_\_\_\_\_ **Preve-Tab 4 in 1 Complete** or **Preve-Tab Tablets** every 5 days or as needed. Once tablets have completely dissolved, add more (1 tablet per 10,000 gallons of pool water). The use of an automatic chlorinator is highly recommended. Maintain the free chlorine level between 1 and 3 ppm.

## Brush and Vacuum the Pool:

Once per week, thoroughly brush and/or vacuum the pool to loosen any algae and debris. This should be done before you begin your weekly **Preve-Time** routine. For pools with automatic vacuums, operate them at least two cycles before beginning your **Preve-Time** regiment.

**My Preve-Time Day is:** \_\_\_\_\_ *(Default Preve-Time Day is Sunday)*

## Shock the Pool:

Every Sunday night (or your selected **Preve-Time**), add \_\_\_\_\_ bags of **Preve-Shock Plus, Shock N Swim, or Cal Hypo** to the pool. Previous to adding oxidizer, remove solar cover, toys, auto covers, and automatic cleaners and keep the pool running overnight. (1 bag of **Preve-Shock Plus** per 10,000 gallons of pool water)

## Prevent Algae:

Every Monday morning (or your selected **Preve-Time**), add \_\_\_\_\_ oz of **Preve-Cide 60 Plus** to the pool. The pool may be used 15 minutes after addition of the product. (4 oz of **Preve-Cide 60 Plus** per 10,000 gallons of pool water)

## Test and Adjust:

Twice per week, test pool water for the pH and Free Chlorine. Make adjustments as needed. See product label for adjustment amounts. If unsure, bring water sample to local BASOC ELEMENTS retailer.

## Estimated Season Supply:

\_\_\_\_\_ Number of Weeks

\_\_\_\_\_ Pounds of 3" **Preve-Tab 4 in 1 Complete** or **Preve-Tab Chlorine Tablets**

\_\_\_\_\_ Bags of **Preve-Shock Plus**

\_\_\_\_\_ Quarts of **Preve-Cide 60 Plus**

\_\_\_\_\_ Lbs **pH Increaser**

\_\_\_\_\_ Lbs **pH Decreaser**

*Always read all chemical packages completely and follow addition instructions carefully. Never mix different chemicals or chemical brands! Store Pool Chemicals in a cool dry place away from the pool equipment and out of reach of children.*



# Salt Generator Maintenance Schedule

## Maintain Chlorine Level:

Test Pool Salt levels and adjust using a high quality pool grade salt as needed. Brush salt until completely dissolved. Retest and add more if needed. Pool should run for 24 hours after salt additions and then retested. Inspect Salt Chlorine Generator to ensure proper operation.

## Brush and Vacuum the Pool:

Once per week, thoroughly brush and/or vacuum the pool to loosen any algae and debris. This should be done before you begin your weekly **Preve-Time** routine. For pools with automatic vacuums, operate them at least two cycles before beginning your **Preve-Time** regiment.

**My Preve-Time Day is:** \_\_\_\_\_ (Default Preve-Time Day is Sunday)

## Shock the Pool:

Every Sunday night (or your selected **Preve-Time**), add \_\_\_\_\_ bags of **Preve-Shock Plus, Shock N Swim, or Cal Hypo** to the pool. Keep the pool running overnight and remove solar covers and other floats/toys from the pool before shocking. (1 Bag of **Preve-Shock Plus** per 10,000 gallons of pool water)

## Prevent Algae:

Every Monday morning (or your selected **Preve-Time**), add \_\_\_\_\_ oz. of **Preve-Cide 60 Plus** to the pool. The pool may be used 15 minutes after addition of the product. (2 oz of **Preve-Cide 60 Plus** per 10,000 gallons of pool water)

## Test and Adjust:

Twice per week test the pool water for the pH reading using chlorine test strips. Adjust up or down as needed. See the product label for adjustment amounts.

## Clean Cell:

At least once per season, clean the cell using **Good Bye Salt Cell Scale** and following the manufacturer's instructions for removing and cleaning the device. More frequent cleaning may be required if low grade salt is used or pool chemistry is not monitored regularly.

## Estimated Season Supply:

\_\_\_\_\_ Number of Weeks

\_\_\_\_\_ Bags of Salt

\_\_\_\_\_ Bags of **Preve-Shock Plus**

\_\_\_\_\_ Quarts of **Preve-Cide 60 Plus**

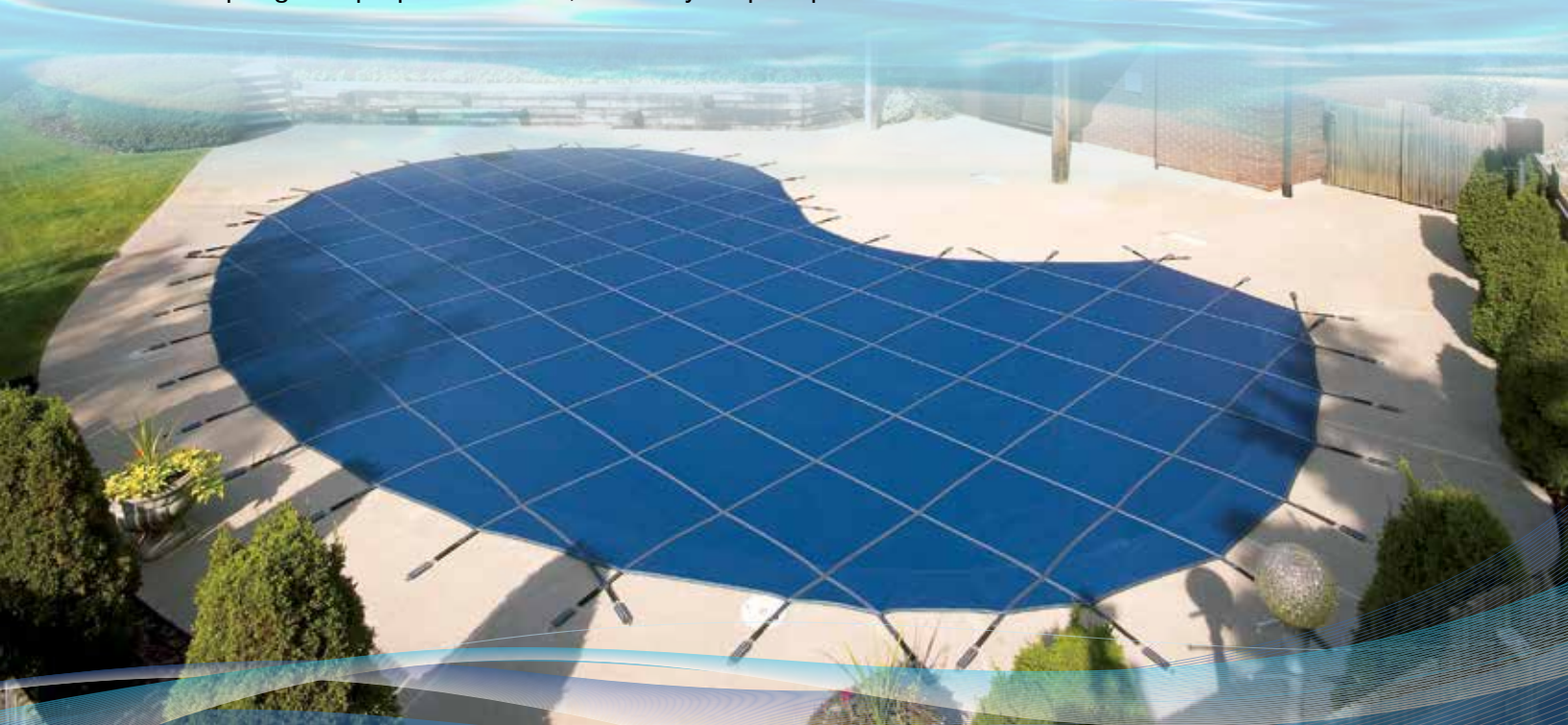
\_\_\_\_\_ Pounds of **pH Decreaser**

\_\_\_\_\_ Pounds of **pH Increaser**

*Always read all chemical packages completely and follow addition instructions carefully. Never mix different chemicals or chemical brands! Store Pool Chemicals in a cool dry place away from the pool equipment and out of reach of children.*

# Closing Your Pool

- 1** At least 48 hours before closing your pool for the season, collect a water sample 18” below the water’s surface and away from inlets. Use an approved water sample container. If one is not available, an empty bottled water container is acceptable. Take the sample to your pool professional for testing and balancing. Follow the instructions on the water analysis print out to balance and protect your pool for the winter.
- 2** Clean the pool by vacuuming or operating your automatic pool cleaner to remove all loose debris and brush surfaces.
- 3** Using **Hello Clean Water Line**, remove any oily buildups at the water’s surface and in the skimmer(s).
- 4** Use **Hello Clean Filter** to clean the pool filter for winter storage. Follow the container instructions for your filter type.
- 5** Apply the **Elements Winter Closing Kit** for your size pool per the instructions. Add the entire kit contents. Brush any materials that settle to the bottom.
- 6** Most pools should utilize minimal draining, if any, for the winter. Removing too much water compromises the structure of the pool. See **Opening Your Pool** and consult your pool dealer/manufacturer for more information.
- 7** Winterize equipment per manufacturer’s instructions. This requires the removal of all water from most plumbing, the pump, the filter, and other areas where freezing could cause damage. Use **Elements Pool Anti-Freeze** to further protect pool lines and equipment.
- 8** The use of a pool cover is highly recommended and its primary purpose is to reduce light in the pool during winter. Direct sunlight promotes algae growth and requires excess work and money at start up next spring. For proper cover use, consult your pool professional.



# Pool Chemical Safety

Using **Essential Elements Swimming Pool Chemicals** will ensure the safety and overall health of your swimming pool equipment and your family. If not properly administered, stored and handled, pool chemicals can pose a serious hazard. Please follow the suggestions below to help ensure a safe and enjoyable pool experience.

## ALWAYS:

- Read chemical labels and follow directions.
- Store chemicals away from direct heat in a well ventilated area away from other chemicals.
- Keep chemicals out of reach of children and pets.
- Keep chemical containers sealed when not being used.
- Dispose of chemicals according to label directions.

## NEVER:

- Mix chemicals unless specifically instructed.
- Mix measuring scoops between chemicals.
- Place a wet scoop back into a chemical container.
- Add chemicals to a pool that is not circulating unless specifically instructed.
- Stack containers of dissimilar chemicals.
- Administer chemicals to the skimmer unless specifically instructed.

## FIRST AID

**IF IN EYES:** Immediately flush eyes with plenty of water for 15 minutes. Get immediate medical attention.

**IF SWALLOWED:** DO NOT INDUCE VOMITING. Drink plenty of water. Call a physician immediately.

**IF ON SKIN:** Brush off excess chemical and wash with soap and water. If irritation persists, get medical attention.

**IF INHALED:** Move to fresh air.

## HOTLINE NUMBER:

Have the product container or label with you when calling a poison control center or doctor, or going for treatment. You may also contact **1-800-535-5053** for emergency treatment information.

# Notes

A series of 20 horizontal blue lines spaced evenly down the page, providing a ruled area for writing notes.



Your Authorized Dealer:

