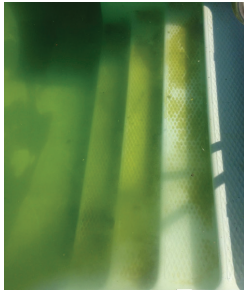




Elements

swimming pool products



Pool Condition: MUSTARD ALGAE

Featured Product: GOODBYE MUSTARD

Overview: Mustard Algae is a light, wispy form of algae that is found on the bottom of swimming pools. The algae enters the pool from plants and trees and is prone to recur annually – and sometimes more frequently. Unlike its name, Mustard Algae can appear yellow, orange, green, brown, or gray in color.

PM

Problem Solvers
and Maintenance

PROBLEM SOLVERS

To rid the pool of this algae and reduce recurrences follow these steps:

- 1) Test pool water and adjust to:
pH of 7.8 or higher
Alkalinity of 125 to 150 PPM
Chlorine of 2.0-2.5 PPM
- 2) Apply **GOODBYE MUSTARD**:
 - Add 2 lbs. of Goodbye Mustard per 15,000 gallons of water (per product instructions)
 - Add 2 lbs. of dry chlorine per 15,000 gallons of water
 - Brush the entire pool
 - Circulate continuously
- 3) Repeat with 2 lbs. of dry chlorine after 24 hours.
- 4) Apply 16 oz. of Poly Algaecide 60 per 15,000 gallons of water after 36 hours.



Process may be repeated for heavy growth situations.



Elements

swimming pool products



Pool Condition: PERSISTENT CLOUDY WATER

Featured Product: GOODBYE CLOUDY WATER (Flocculant)

Overview: Persistent cloudy water that does not clear through traditional methods may require a flocculant treatment. Typically persistent cloudiness is a sign of other problems – poor filtration, unusual amounts of debris, pools that were winterized with large amounts of debris, etc. While Goodbye Cloudy Water will typically clear pool water, steps should be taken to prevent the condition from recurring.

PM

Problem Solvers
and Maintenance

PROBLEM SOLVERS

To floc the pool follow these steps:

- 1) Test pool water and adjust to:
 - pH of 7.4 to 7.6
 - Alkalinity of 125 to 150 PPM
 - Chlorine to 1.0-2.0 PPM
- 2) Apply **GOODBYE CLOUDY WATER**:
 - Turn pool pump off
(be sure pool timers will not restart during the treatment)
 - Add 4 oz. of Goodbye Cloudy Water per 5000 gallons of water
 - Apply evenly over the pool water surface
 - Brush the entire pool
 - Wait 24-72 hours and vacuum settled debris to waste
(bypassing the filter media)
- 3) Use **HELLO CLEAR WATER** per product instructions as needed to maintain clarity.
Frequent use of flocculants is not recommended. If cloudy conditions persist, contact your pool professional for service.





Elements

swimming pool products



Pool Condition: PURPLE STAINING (Manganese)

Featured Product: GOODBYE DIFFICULT STAINS

Overview: Pools that exhibit purple staining is the result of manganese in the pool water. Some municipalities add manganese to water supplies to protect delivery pipes. Pools in these areas are likely to have manganese levels in the pool and eventually the manganese will precipitate out in the form of purple stains and discoloration.

PM

Problem Solvers
and Maintenance

PROBLEM SOLVERS

To rid the pool of the stains follow these steps:

- 1) Test pool water and adjust to:** pH of 7.4
Alkalinity of 125 to 150 PPM
Chlorine to below 1.0 PPM

2) Apply GOODBYE DIFFICULT STAINS:

- Turn pool pump off 4 hours before treating, allowing the water to become still
- Add 1 bag of Goodbye Difficult Stains per 10,000 gallons of water
- Sprinkle over pool surface directly above spotted areas
- Keep the pool off for one hour and then restart the pool
- Let the pool run 24 hours

- 3) Add 16 oz. of GOODBYE METAL per 10,000 gallons of water. Use weekly at the rate of 3 oz. per 10,000 gallons to prevent stains from recurring.**



**For heavy staining, the treatment may be repeated.
However, preventing future recurrences is highly recommended.**



Elements

swimming pool products



Pool Condition: BROWN STAINING (Iron)

Featured Product: GOODBYE STAINS

Overview: Pools that exhibit brown staining is the result of iron in the pool water. Homes with private wells, professional water deliveries from natural sources, and pools that utilize salt chlorine generators are likely to have iron levels in the pool and eventually the iron will precipitate out in the form of brown stains and discoloration.

PM

Problem Solvers
and Maintenance

PROBLEM SOLVERS

To rid the pool of the stains follow these steps:

- 1) Test pool water and adjust to:
 - pH of 7.4
 - Alkalinity of 125 to 150 PPM
 - Chlorine to below 1.0 PPM
- 2) Apply **GOODBYE STAINS**:
 - Turn pool pump off 4 hours before treating, allowing the water to become still
 - Add 1 bag of Goodbye Stains per 10,000 gallons of water
 - Sprinkle over pool surface directly above spotted areas
 - Keep the pool off for one hour and then restart the pool
 - Let the pool run 24 hours
- 3) Add 16 oz. of **GOODBYE METAL** per 10,000 gallons of water. Use weekly at the rate of 3 oz. per 10,000 gallons to prevent stains from recurring.



**For heavy staining, the treatment may be repeated.
However, preventing future recurrences is highly recommended.**



Elements

swimming pool products



Pool Condition: GREEN/ORANGE STAINING (Copper)

Featured Product: GOODBYE DIFFICULT STAINS

Overview: Pools that exhibit green staining is the result of copper in the pool water. Homes with copper pipes, overuse of certain pool products (copper algaecides), and pools that exhibit poor water chemistry and have heaters are likely to have copper levels in the pool and eventually the copper will precipitate out in the form of green/orange stains and discoloration.

PM

Problem Solvers
and Maintenance

PROBLEM SOLVERS

To rid the pool of the stains follow these steps:

- 1) Test pool water and adjust to:
 - pH of 7.4
 - Alkalinity of 125 to 150 PPM
 - Chlorine to below 1.0 PPM
- 2) Apply **GOODBYE DIFFICULT STAINS**:
 - Turn pool pump off 4 hours before treating, allowing the water to become still
 - Add 1 bag of Goodbye Difficult Stains per 10,000 gallons of water
 - Sprinkle over pool surface directly above spotted areas
 - Keep the pool off for one hour and then restart the pool
 - Let the pool run 24 hours
- 3) Add 16 oz. of **GOODBYE METAL** per 10,000 gallons of water. Use weekly at the rate of 3 oz. per 10,000 gallons to prevent stains from recurring.



**For heavy staining, the treatment may be repeated.
However, preventing future recurrences is highly recommended.**



Elements

swimming pool products



**Pool Condition: BROWN, GREEN, PURPLE WATER
(Metals in pool water)**

**Featured Product: GOODBYE METALS
(and Phos-Free Version)**

Overview: Pools that exhibit brown, clear green, purple water is the result of metals in the pool water. Pools chemicals, source water, pool equipment and other sources contribute to metal content in swimming pools. If left untreated metals will eventually precipitate out in the form of colored stains and discoloration.

PM

Problem Solvers
and Maintenance

PROBLEM SOLVERS

To rid the pool of the metals follow these steps:

- 1) Test pool water and adjust to:
 - pH of 7.4
 - Alkalinity of 125 to 150 PPM
 - Chlorine to below 1.0 PPM
- 2) Apply **GOODBYE METAL**:
 - Run pool continuously for 24 hours before treatment
 - Add 16 oz. of Goodbye Metal per 10,000 gallons of water
 - Apply directly to water by walking around pool perimeter
 - Let the pool run continuously for 72 hours
- 3) Use weekly at the rate of 3 oz. per 10,000 gallons to prevent water discoloration from recurring.



For severe discoloration, the treatment may be repeated.



Elements

swimming pool products



**Pool Condition: SALT CHLORINE GENERATOR
Low Chlorine Levels (Device is Scaled)**

Featured Product: GOODBYE SALT CELL SCALE)

Overview: The use of Salt Chlorine Generators (more commonly called salt pools) has become very common. Through the process of using salt to create chlorine in the pool, reactions happen in the cell that lead to different forms of scaling. Regular cleaning of the cell is required to maintain production.

PM

Problem Solvers
and Maintenance

PROBLEM SOLVERS

To rid the Salt Chlorine Generator of the scale follow these steps:

- 1) Test pool water and adjust to:
pH of 7.4
Alkalinity of 125 to 150 PPM
Chlorine to below 250 PPM
- 2) Apply **GOODBYE SALT CELL SCALE**:
 - Test Salt Levels in the pool and adjust to manufacturer's recommended levels
 - Add the entire contents of GOODBYE SALT CELL SCALE
 - Apply per the Chlorine Generator manufacturer's instructions
- 3) Use to clean and refresh the Salt Chlorine Generator Cell every 3 months.





Elements

swimming pool products



Pool Condition: GREASY OILY BUILDUP AT WATER LINE, IN THE SKIMMER, AND/OR FOAMY WATER

Featured Product: GOODBYE SCUM LINES

Overview: Heavy use of personal care products (including sun screens), as well as environmental factors from rain and snow, can lead to oily rings around the pool and possibly cause foamy water. Using an ENZYME based enhancer will reduce and eliminate these problems and lead to better water clarity, as well as reduce the amount of sanitizer needed to maintain water quality.

PM

Problem Solvers
and Maintenance

PROBLEM SOLVERS

To rid the pool of these undesirable issues follow these steps:

- 1) Test pool water and adjust to:
 - pH of 7.4
 - Alkalinity of 125 to 150 PPM
 - Chlorine to below 2.0 PPM
- 2) Apply **GOODBYE SCUM LINES**:
 - Run pool continuously for 24 hours before treatment
 - Turn off all waterfalls, fountains, etc.
 - Add 20 oz. of GOODBYE SCUM LINES per 10,000 gallons of pool water
 - Apply directly to pool water by walking around pool perimeter
 - Let the pool run continuously for 24 hours
- 3) Use weekly at the rate of 6 oz. per 10,000 gallons of pool water to prevent conditions from recurring.



For severe build ups, the treatment may be repeated.



Elements

swimming pool products



Pool Condition: HARSH FEELING WATER, DIFFICULT TO CONTROL WATER BALANCE

Featured Product: HELLO SOFT WATER

Overview: Pool water that closely matches human body chemistry will always be the most comfortable to swim in. Borate products have been proven to make the water feel softer, reduce chlorine consumption and make overall water balance easier to maintain. Added benefits are crystal clear water and better filtration.

PM

Problem Solvers
and Maintenance

PROBLEM SOLVERS

To enhance the feel and function of the pool follow these steps:

1) Test pool water and adjust to: pH of 7.4
Alkalinity of 125 to 150 PPM

2) Apply **HELLO SOFT WATER:**

- Run the Pool continuously for 24 hours
- Add HELLO SOFT WATER per instructions on the bucket
- Broadcast the product evenly over the pool surface
- Let the pool run continuously for 24 hours



3) Reapplication is done in much smaller doses than the initial one and typically is only needed once or twice per year. Bring a water sample to your professional dealer for exact dosages.