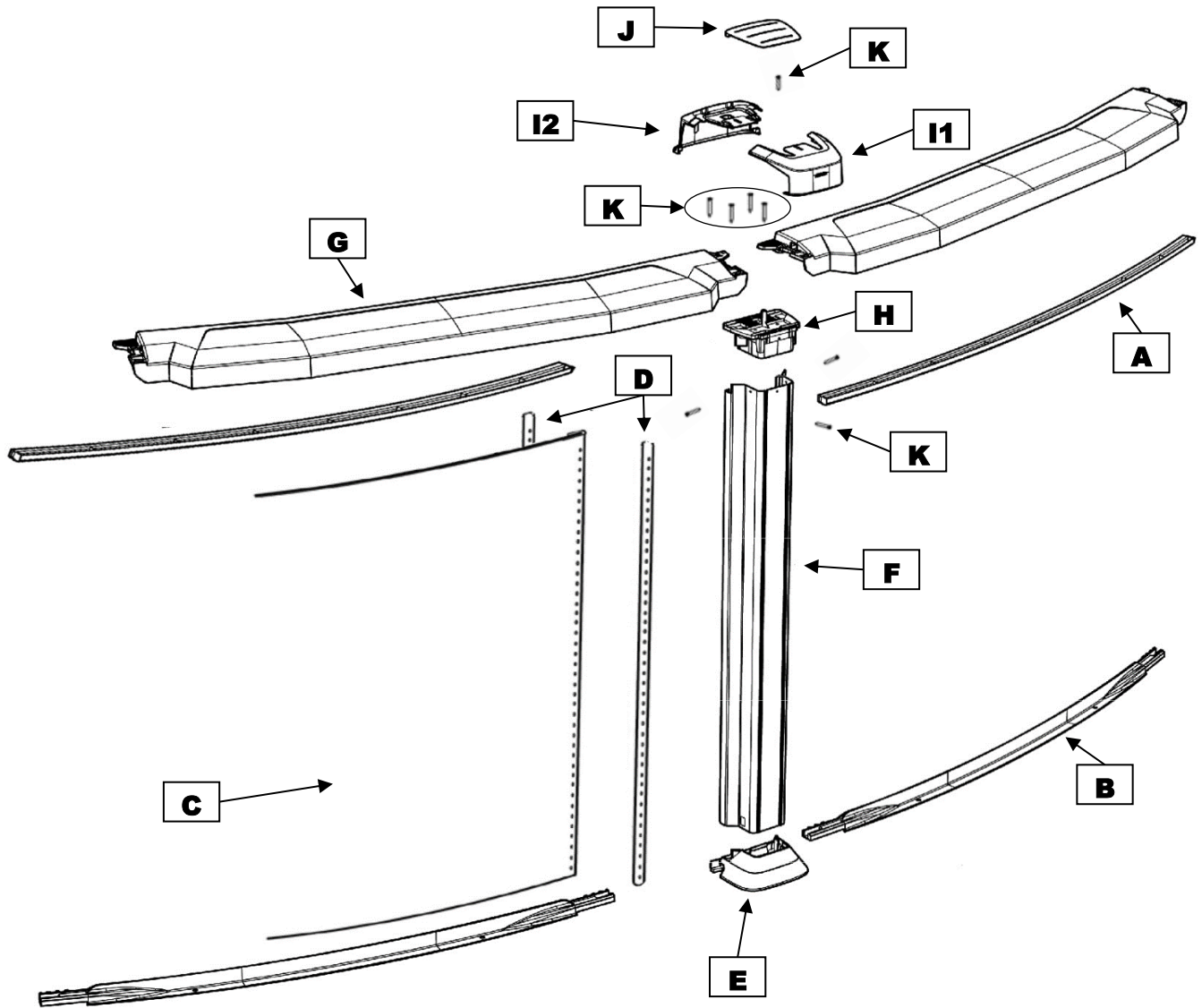


Java RTR
PJAV-52RSRRRRQ31
Round



Product Description:**Java Round**

Revised Sept 2017

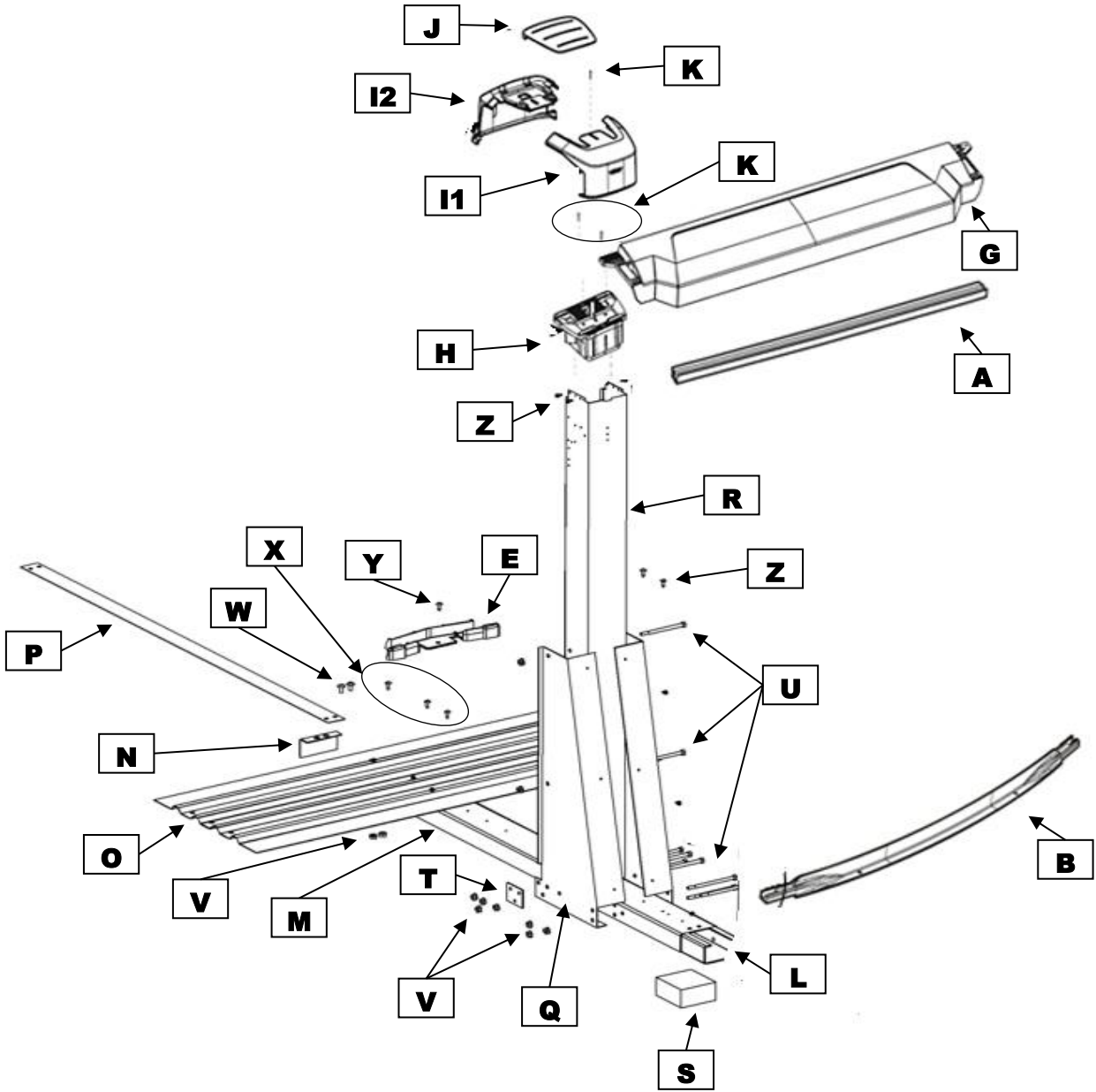
Product Code:**PJAV-52RSRRRRQ31**

				Quantity required for installation (by pool size)								
Index #	Description	Part #	Length	12	15	18	21	24	27	30	33	PRICING
A	Stabilizer 12', 15'	1071507160000		8	10							\$17,35
A	Stabilizer 18' 21' 24'	1072407160000				12	14	16				\$17,35
A	Stabilizer 27' 30' 33'	1073007160000							18	20	22	\$17,35
B	Bottom rail 12', 15'	1081547000000		8	10							\$26,78
B	Bottom rail 18', 21', 24'	1082447000000				12	14	16				\$26,78
B	Bottom rail 27', 30', 33'	1083047000000							18	20	22	\$26,78
C	Steel wall			1	1	1	1	1	1	1	1	
D	Steel bar	11825		2	2	2	2	2	2	2	2	\$9,36
E	Bottom plate	11247350000		8	10	12	14	16	18	20	22	\$10,93
F	Upright	10247350002	52"	8	10	12	14	16	18	20	22	\$89,48
G	Top ledge	10147350000	56"	8	10	12	14	16	18	20	22	\$94,88
H	Top plate	11147350000		8	10	12	14	16	18	20	22	\$8,56
I1	Ledge cover (front part)	10347350000		8	10	12	14	16	18	20	22	\$5,14
I2	Ledge cover (back part)	10347350010		8	10	12	14	16	18	20	22	\$5,79
J	Ledge cover plate	10347350030		8	10	12	14	16	18	20	22	\$2,78
K	Stainless steel screw 12 x ¾ inch	2PPS121		75	93	111	129	147	165	183	201	\$1,11
*	Hardware bag	1051200350		1								\$83,46
*	Hardware bag	1051500350			1							\$103,44
*	Hardware bag	1051800350				1						\$123,44
*	Hardware bag	1052100350					1					\$143,42
*	Hardware bag	1052400350						1				\$163,42
*	Hardware bag	1052700350							1			\$183,41
*	Hardware bag	1053000350								1		\$203,40
*	Hardware bag	1053300350									1	\$223,55
**	Hardware bag for wall	1050000054		1	1	1	1	1	1	1	1	\$50,30
	Thru phill 18-8 bolts 18-8	99-0023		31	31	31	31	31	31	31	31	\$0,63
	Flange nuts S/S 1/4-20	2FGS422		31	31	31	31	31	31	31	31	\$0,48
	Installation DVD	SACWBI36875		1	1	1	1	1	1	1	1	\$10,31

* in the hardware bag you will find parts: #2PPS121

** In the hardware bag for wall you will find parts: #99-0023 - #2FGS422

Java RTR
PJAV-YM52RSRRRRQ31
Yardmore
Straight Section



Product Description:				Java Oval			Revised Sept 2017		
Product Code:				PJAV-YM52RSRRRRQ31					
				Quantity required for installation (by pool size)					
Index#	Description	Part #	Length	1216	1218	1220	1224	1526	PRICING
A	Stabilizer (Round section)	1071507160000		4	6	6	6	8	\$17,35
A	Stabilizer (Round section)	1072407160000							\$17,35
A	Stabilizer (Straight section)	10707000042	42"	2	6	2	4	4	\$12,21
A	Stabilizer-transition (End of straight section)	1071507160010		4		4	4	4	\$14,60
B	Bottom rail (Section round)	1081547000000		4	6	6	6	8	\$26,78
B	Bottom rail (Section round)	1082447000000							\$26,78
B	Bottom rail (Straight section)	10847000042	42"	2	6	2	4	4	\$15,85
B	Bottom rail-transition (End of straight section)(right)	1081547000020		2		2	2	2	\$19,84
B	Bottom rail-transition (End of straight section)(left)	1081547000030		2		2	2	2	\$19,84
C	Steel wall			1	1	1	1	1	
D	Steel bar	11825		2	2	2	2	2	\$9,36
E	Bottom plate	11247350000		6	8	8	8	10	\$10,93
E	Bottom plate (straight section)	10433000000		4	4	4	6	6	\$15,00
F	Upright	10247350002	52"	6	8	8	8	10	\$89,48
G	Top ledge	10147350000	56"	8	6	10	10	12	\$94,88
G	Top ledge (straight section)	10147350042	42"	2	6	2	4	4	\$74,53
H	Top plate	11147350000		10	12	12	14	16	\$8,56
I1	Ledge cover (front part)	10347350000		10	12	12	14	16	\$5,14
I2	Ledge cover (back part)	10347350010		10	12	12	14	16	\$5,79
J	Ledge cover plate	10347350030		10	12	12	14	16	\$2,78
K	Pan Phill SS #12,1 TYPE A	2PPS121		60	70	70	80	90	\$1,11
L	Under channel	15933		4	4	4	6	6	\$199,28
M	Steel strap end channel	16539		4	4	4	6	6	\$152,95
N	Oval channel end cap	22726		4	4	4	6	6	\$1,11
O	Steel pressure plate	16549		4	4	4	6	6	\$111,69
P	Strap 12'	16724		4	4	4	6		\$11,59
P	Strap 15'	16725						9	\$11,59
Q	Right gusset	22248		4	4	4	6	6	\$78,06
Q	Left gusset	22247		4	4	4	6	6	\$78,06
R	Straight side steel upright	10010		4	4	4	6	6	\$103,14
S	Foam block	29917		4	4	4	6	6	\$6,51
T	Washer 3 holes	16663		8	8	8	12	12	\$1,27
U	Bolt 5" x 5/16 - 18	99-0073		40	40	40	60	60	\$2,70
V	Nut 5/16 - 18	99-0027		52	52	52	84	84	\$0,63
W	Screw ½" x 5/16 - 18	99-0026		12	12	12	24	24	\$1,60
X	Screw ½" #10	99-0068		34	34	34	46	46	\$0,29
Y	Screw #10x1" 18-8SS	99-0070		5	5	5	10	10	\$0,66
Z	Stainless steel screw 12 x ¾"	V12x34		60	60	60	80	80	\$0,46
*	Hardware bag	1051216350		1					\$90,12
*	Hardware bag	1051220350			1	1			\$110,27
*	Hardware bag	1051224350					1		\$123,44
*	Hardware bag	1051526350						1	\$143,42
**	Hardware for wall	1050000054		1	1	1	1	1	\$50,30

Product Description:**Java Oval**

Revised Sept 2017

Product Code:**PJAV-YM52RSRRRRQ31**

				Quantity required for installation (by pool size)					
Index#	Description	Part #	Length	1216	1218	1220	1224	1526	PRICING
***	Hardware bag	16720		1	1	1	1	1	\$90,44
***	Hardware bag	16722					1	1	\$45,38
****	Hardware bag	10522122		1	1	1			\$76,01
****	Hardware bag	10522124					1	1	\$117,26
	Thruss phill 18-8 bolts 18-8 1/4-0x3/4	99-0023		31	31	31	31	31	\$0,63
	Flange nuts S/S 1/4-20 Serrated	2FGS422		31	31	31	31	31	\$0,48
	Installation DVD	SACWBI36875		1	1	1	1	1	\$10,31

* In the hardware bag you will find parts: #2PPS121

** In the hardware bag for wall you will find parts: #99-0023 - #2FGS422

*** In the hardware bag you will find parts: #99-0070 - #99-0027 - #16663

**** In the hardware bag you will find parts: #99-0073 - #99-0070 - #99-0068 - #99-0027 - #99-0026 - #V12x34

Product Description:				Java Oval			Revised Sept 2017		
Product Code:				PJAV-YM52RSRRRRQ31					
				Quantity required for installation (by pool size)					
Index#	Description	Part #	Length	1530	1833	1840	1844	2143	PRICING
A	Stabilizer (Round section)	1071507160000		8	10	10	10		\$17,35
A	Stabilizer (Round section)	1072407160000						10	\$17,35
A	Stabilizer (Straight section)	10707000042	42"	6	6	10	12	12	\$12,21
A	Stabilizer-transition (End of straight section)	1071507160010		4	4	4	4		\$14,60
A	Stabilizer-transition (End of straight section)	1072407160010						4	\$14,60
B	Bottom rail (Section round)	1081547000000		8	10	10	10		\$26,78
B	Bottom rail (Section round)	1082447000000						10	\$26,78
B	Bottom rail (Straight section)	10847000042	42"	6	6	10	12	12	\$15,85
B	Bottom rail-transition (End of straight section)(right)	1081547000020		2	2	2	2		\$19,84
B	Bottom rail-transition (End of straight section)(left)	1081547000030		2	2	2	2		\$19,84
B	Bottom rail-transition (End of straight section)(right)	1082447000020						2	\$33,32
B	Bottom rail-transition (End of straight section)(left)	1082447000030						2	\$33,32
C	Steel wall			1	1	1	1	1	
D	Steel bar	11825		2	2	2	2	2	\$9,36
E	Bottom plate	11247350000		10	12	12	12	12	\$10,93
E	Bottom plate (straight section)	10433000000		8	8	12	14	14	\$15,00
F	Upright	10247350002	52"	10	12	12	14	12	\$89,48
G	Top ledge	10147350000	56"	12	14	14	14	14	\$94,88
G	Top ledge (straight section)	10147350042	42"	6	6	10	12	12	\$74,53
H	Top plate	11147350000		18	20	24	26	26	\$8,56
I1	Ledge cover (front part)	10347350000		18	20	24	26	26	\$5,14
I2	Ledge cover (back part)	10347350010		18	20	24	26	26	\$5,79
J	Ledge cover plate	10347350030		18	20	24	26	26	\$2,78
K	Pan Phill SS #12,1 TYPE A	2PPS121		100	110	130	140	150	\$1,11
L	Under channel	15933		8	8	12	14	14	\$199,28
M	Steel strap end channel	16539		8	8	12	14	14	\$152,95
N	Oval channel end cap	22726		8	8	12	12	14	\$1,11
O	Steel pressure plate	16549		8	8	12	14	14	\$111,69
P	Strap 15'	16725		12					\$11,59
P	Strap 18'	16726			12	18	21		\$14,92
P	Strap 21'	22126						28	\$17,14
Q	Right gusset	22248		8	8	12	14	14	\$78,06
Q	Left gusset	22247		8	8	12	14	14	\$78,06
R	Straight side steel upright	10010		8	8	12	12	14	\$103,14
S	Foam block	29917		8	8	12	12	14	\$6,51
T	Washer 3 holes	16663		16	16	24	28	28	\$1,27
U	Bolt 5" x 5/16 - 18	99-0073		80	80	120	140	140	\$2,70
V	Nut 5/16 - 18	99-0027		112	112	168	196	210	\$0,63
W	Screw 1/2" x 5/16 - 18	99-0026		32	32	48	56	70	\$1,60
X	Screw 1/2" #10	99-0068		58	58	82	94	94	\$0,29

Product Description:				Java Oval			Revised Sept 2017		
Product Code:				PJAV-YM52RSRRRRQ31					
				Quantity required for installation (by pool size)					
Index#	Description	Part #	Length	1530	1833	1840	1844	2143	PRICING
Y	Screw #10x1" 18-8SS	99-0070		10	10	12	14	14	\$0,66
Z	Stainless steel screw 12 x 3/4"	V12x34		105	105	136	150	158	\$0,46
*	Hardware bag	1051530350		1					\$156,76
*	Hardware bag	1051833350			1				\$176,74
*	Hardware bag	1051840350				1			\$203,56
*	Hardware bag	1051844350					1		\$216,88
*	Hardware bag	1052143350						1	\$216,88
**	Hardware for wall	1050000054		1	1	1	1	1	\$50,30
***	Hardware bag	16720		2	2	3	3	3	\$90,44
***	Hardware bag	16722					1	1	\$45,38
****	Hardware bag	10522123		1	1				\$151,49
****	Hardware bag	10522125				1			\$193,92
****	Hardware bag	10522126					1		\$247,83
****	Hardware bag	10522127						1	\$266,86
	Thru phill 18-8 bolts 18-8 1/4-0x3/4	99-0023		31	31	31	31	31	\$0,63
	Flange nuts S/S 1/4-20 Serrated	2FGS422		31	31	31	31	31	\$0,48
	Installation DVD	SACWBI36875		1	1	1	1	1	\$10,31

* In the hardware bag you will find parts: #2PPS121

** In the hardware bag for wall you will find parts: #99-0023 - #2FGS422

*** In the hardware bag you will find parts: #99-0070 - #99-0027 - #16663

**** In the hardware bag you will find parts: #99-0073 - #99-0070 - #99-0068 - #99-0027 - #99-0026 - #V12x34

Carton Contents

101152647350000

Pool Carton:
TOP RAIL 1526 SOHO JAVA

QTY	Piece Part	DESCRIPTION
12	CWI-10147350000	TOP LEDGE 8" SOHO RESIN CMN CVD 56-3/4" [Q]
4	CWI-10147350042	TOP LEDGE 8" SOHO RESIN 43" [Q]

Packaging/Shipping Materials

2	CWI-4SEP107	SEPARATOR ILL2000 45 5/8 X 14 3/4
2	LN7512	SLEEVE 75" X 12"
2	BTE572110	BOX TEL REVERSIBLE 57-1/4 X 21-3/8 X 10 275C

Carton Contents

102152644350002

Pool Carton:
 UPRIGHT 1526 SILVER BRUSHED JAVA 52"

QTY	Piece Part	DESCRIPTION
10	CWI-10247350002	UPRIGHT SILVER BRUSHED JAVA FOR 52" (51")

Packaging/Shipping Materials

1	CWI.4MBT058	BOX FOR DEMO 58 1/2 X 12 X 11 1/4
----------	--------------------	--

Carton Contents

134152647350000

Pool Carton:
RESIN KIT 1526 SOHO JAVA

QTY	Piece Part	DESCRIPTION
1	CWI-1051526350	HWARE 1526 LIBERTY OVAL
2	CWI-1081547000030	BOT TRACK CORNER 15' SOHO LEFT
4	CWI-1071507160010	TOP TRACK CORNER 15' CHAMPAGNE REFLEXION
16	CWI-10347350030	LEDGE COVER 8" PLATE SOHO [Q21]
2	CWI-1081547000020	BOT TRACK CORNER 15' SOHO RIGHT
8	CWI-1071507160000	TOP TRACK 15' CHAMPAGNE UNIVERSAL
16	CWI-11147350000	TOP PLATE SOHO [Q21]
8	CWI-1081547000000	BOTTOM TRACK 15' SOHO TRUE SIZE
1	SACWBI36875	SAC DVD D'INSTALLATION AQUALEADER
6	CWI-10433000000	BOTTOM CONNECTOR CONTOUR GREY
16	CWI-10347350000	LEDGE COVER 8" SOHO [Q21]
4	CWI-10847000042	BOT TRACK SOHO STRAIGHT SIDE OVAL
10	CWI-11247350000	FOOT COVER 8" SOHO [Q21]
4	CWI-10707000042	TOP TRACK CHAMPAGNE STRAIGHT SIDE OVAL
16	CWI-10347350010	LEDGE COVER 8" INNER SOHO [Q21]

Packaging/Shipping Materials

2	BTE572110	BOX TEL REVERSIBLE 57-1/4 X 21-3/8 X 10 275C
1	cwi- 4MBT032	SEAT CAP+PLATES BOX 42X14 3/8 X 8 3/16

Carton Contents

140152600420000

Pool Carton:
PRESSURE PLATES 15X26 CONTOUR (42")

QTY	Piece Part	DESCRIPTION
6	WBI-16549	PRESSURE PLATE CONTOUR OVAL (42" SECT)

Packaging/Shipping Materials

2	BTE501402	BOX 50" X 14" X 2"
----------	------------------	---------------------------

Carton Contents

141152600420000

Pool Carton:
STRAPS CONTOUR 15X26 (42")

QTY	Piece Part	DESCRIPTION
6	WBI-16539	STRAP END CHANNEL
9	WBI-16725	ON-GROUND STRAP CONTOUR 15' (40.683")
6	WBI-22726	OVAL CHANNEL END CAP

Packaging/Shipping Materials

2	BTE540805	BOX 54" X 8-3/4" X 5"
----------	------------------	------------------------------

Carton Contents

143152644423502

Pool Carton:
METAL UPR SILVER BRUSHED 15X26 JAVA 52"

QTY	Piece Part	DESCRIPTION
6	WBI-29917	FOAM BLOCK
1	10522124	HARDWARE 1224 / 1526 STEEL STRUCTURE LIBERTY
6	10010	WRAP UR OVAL SILVERBRUSHED 53.27 JAVA (FOR 52" TALL

Packaging/Shipping Materials

1	NLR- 1810120	TEL TOP 59X14-1/8X5 275BC
1	NLR- 1810131	TEL BTM 59X14-1/8X5 275BC

Carton Contents

144000044423500

Pool Carton:

UN CHAN & GUS SILVER BRUSHED JAVA (42") ALL SIZE 2 PCS

	QTY	Piece Part	DESCRIPTION
	2	WBI-22247	YARDMORE GUSSET LEFT BRUSHED SILVER
	1	WBI-16722	HWARE GUSSETS 2 PACK
	2	WBI-22248	YARDMORE GUSSET RIGHT BRUSHED SILVER
	2	WBI-15933	UNDER CHANNEL CONTOUR

Packaging/Shipping Materials

2	BTE521604	BOX 52" X 16" X 4-1/2"
----------	------------------	------------------------

Carton Contents

145000044423500

Pool Carton:

UN CHAN & GUS SILVER BRUSHED JAVA (42") ALL SIZE 4 PCS

	QTY	Piece Part	DESCRIPTION
	4	WBI-22247	YARDMORE GUSSET LEFT BRUSHED SILVER
	4	WBI-22248	YARDMORE GUSSET RIGHT BRUSHED SILVER
	1	WBI-16720	HWARE GUSSETS 4 PACK
	4	WBI-15933	UNDER CHANNEL CONTOUR

Packaging/Shipping Materials

	2	BTE521604	BOX 52" X 16" X 4-1/2"
--	----------	------------------	------------------------

Carton Contents

101153047350000

Pool Carton:
TOP RAIL 1530 SOHO JAVA

	QTY	Piece Part	DESCRIPTION
	6	CWI-10147350042	TOP LEDGE 8" SOHO RESIN 43" [Q]
	12	CWI-10147350000	TOP LEDGE 8" SOHO RESIN CMN CVD 56-3/4" [Q]

Packaging/Shipping Materials

	2	BTE572110	BOX TEL REVERSIBLE 57-1/4 X 21-3/8 X 10 275C
	2	cwi-4SEP107	SEPARATOR ILL2000 45 5/8 X 14 3/4

Carton Contents

102153044350002

Pool Carton:
UPRIGHT 1530 SILVER BRUSHED JAVA 52"

QTY	Piece Part	DESCRIPTION
10	CWI-10247350002	UPRIGHT SILVER BRUSHED JAVA FOR 52" (51")

Packaging/Shipping Materials

1	CWI.4MBT058	BOX FOR DEMO 58 1/2 X 12 X 11 1/4
----------	--------------------	--

Carton Contents

134153047350000

Pool Carton:
RESIN KIT 1530 SOHO JAVA

QTY	Piece Part	DESCRIPTION
1	SACWBI36875	SAC DVD D'INSTALLATION AQUALEADER
10	CWI-11247350000	FOOT COVER 8" SOHO [Q21]
18	CWI-11147350000	TOP PLATE SOHO [Q21]
6	CWI-10847000042	BOT TRACK SOHO STRAIGHT SIDE OVAL
6	CWI-10707000042	TOP TRACK CHAMPAGNE STRAIGHT SIDE OVAL
18	CWI-10347350000	LEDGE COVER 8" SOHO [Q21]
1	CWI-1051530350	HWARE 1530 LIBERTY OVAL
8	CWI-1071507160000	TOP TRACK 15' CHAMPAGNE UNIVERSAL
8	CWI-1081547000000	BOTTOM TRACK 15' SOHO TRUE SIZE
2	CWI-1081547000030	BOT TRACK CORNER 15' SOHO LEFT
2	CWI-1081547000020	BOT TRACK CORNER 15' SOHO RIGHT
18	CWI-10347350030	LEDGE COVER 8" PLATE SOHO [Q21]
18	CWI-10347350010	LEDGE COVER 8" INNER SOHO [Q21]
8	CWI-10433000000	BOTTOM CONNECTOR CONTOUR GREY
4	CWI-1071507160010	TOP TRACK CORNER 15' CHAMPAGNE REFLEXION

Packaging/Shipping Materials

1	cwi.4MBT032	SEAT CAP+PLATES BOX 42X14 3/8 X 8 3/16
2	BTE572110	BOX TEL REVERSIBLE 57-1/4 X 21-3/8 X 10 275C

Carton Contents

140153000420000

Pool Carton:
PRESSURE PLATES 15X30 CONTOUR (42")

QTY	Piece Part	DESCRIPTION
8	WBI-16549	PRESSURE PLATE CONTOUR OVAL (42" SECT)

Packaging/Shipping Materials

2	BTE501402	BOX 50" X 14" X 2"
----------	------------------	---------------------------

Carton Contents

141153000420000

Pool Carton:
STRAPS CONTOUR 15X30 (42")

QTY	Piece Part	DESCRIPTION
12	WBI-16725	ON-GROUND STRAP CONTOUR 15' (40.683")
8	WBI-22726	OVAL CHANNEL END CAP
8	WBI-16539	STRAP END CHANNEL

Packaging/Shipping Materials

2	BTE540805	BOX 54" X 8-3/4" X 5"
----------	------------------	------------------------------

Carton Contents

143153044423502

Pool Carton:
METAL UPR SILVER BRUSHED 15X30 JAVA 52"

	QTY	Piece Part	DESCRIPTION
	8	10010	WRAP UR OVAL SILVERBRUSHED 53.27 JAVA (FOR 52" TALL
	8	WBI-29917	FOAM BLOCK
	1	10522123	HARDWARE 1530 / 1833 STEEL STRUCTURE LIBERTY

Packaging/Shipping Materials

1	NLR- 1810140	TEL BTM 59X13-5/8X8-1/4 200BC
1	NLR- 1810120	TEL TOP 59X14-1/8X5 275BC

Carton Contents

145000044423500

Pool Carton:

UN CHAN & GUS SILVER BRUSHED JAVA (42") ALL SIZE 4 PCS

	QTY	Piece Part	DESCRIPTION
	4	WBI-22247	YARDMORE GUSSET LEFT BRUSHED SILVER
	4	WBI-22248	YARDMORE GUSSET RIGHT BRUSHED SILVER
	1	WBI-16720	HWARE GUSSETS 4 PACK
	4	WBI-15933	UNDER CHANNEL CONTOUR

Packaging/Shipping Materials

2	BTE521604	BOX 52" X 16" X 4-1/2"
----------	------------------	-------------------------------

Carton Contents

146000044423500

Pool Carton:

UN CHAN & GUS SILVER BRUSHED JAVA (42") ALL SIZE 4 PCS

	QTY	Piece Part	DESCRIPTION
	1	WBI-16720	HWARE GUSSETS 4 PACK
	4	WBI-22248	YARDMORE GUSSET RIGHT BRUSHED SILVER
	4	WBI-22247	YARDMORE GUSSET LEFT BRUSHED SILVER
	4	WBI-15933	UNDER CHANNEL CONTOUR

Packaging/Shipping Materials

	2	BTE521604	BOX 52" X 16" X 4-1/2"
--	----------	------------------	-------------------------------

Carton Contents

101183347350000

Pool Carton:
TOP RAIL 1833 SOHO JAVA

	QTY	Piece Part	DESCRIPTION
	14	CWI-10147350000	TOP LEDGE 8" SOHO RESIN CMN CVD 56-3/4" [Q]
	6	CWI-10147350042	TOP LEDGE 8" SOHO RESIN 43" [Q]

Packaging/Shipping Materials

	2	CWI-4SEP107	SEPARATOR ILL2000 45 5/8 X 14 3/4
	2	BTE572110	BOX TEL REVERSIBLE 57-1/4 X 21-3/8 X 10 275C

Carton Contents

102183344350002

Pool Carton:
UPRIGHT 1833 SILVER BRUSHED JAVA 52"

QTY	Piece Part	DESCRIPTION
12	CWI-10247350002	UPRIGHT SILVER BRUSHED JAVA FOR 52" (51")

Packaging/Shipping Materials

1	CWI.4MBT058	BOX FOR DEMO 58 1/2 X 12 X 11 1/4
----------	--------------------	--

Carton Contents

134183347350000

Pool Carton:
 RESIN KIT 1833 SOHO JAVA

QTY	Piece Part	DESCRIPTION
1	CWI-1051833350	HWARE 1833 LIBERTY OVAL
20	CWI-10347350000	LEDGE COVER 8" SOHO [Q21]
1	SACWBI36875	SAC DVD D`INSTALLATION AQUALEADER
8	CWI-10433000000	BOTTOM CONNECTOR CONTOUR GREY
12	CWI-11247350000	FOOT COVER 8" SOHO [Q21]
20	CWI-10347350030	LEDGE COVER 8" PLATE SOHO [Q21]
2	CWI-1081547000020	BOT TRACK CORNER 15' SOHO RIGHT
2	CWI-1081547000030	BOT TRACK CORNER 15' SOHO LEFT
10	CWI-1071507160000	TOP TRACK 15' CHAMPAGNE UNIVERSAL
20	CWI-11147350000	TOP PLATE SOHO [Q21]
10	CWI-1081547000000	BOTTOM TRACK 15' SOHO TRUE SIZE
6	CWI-10847000042	BOT TRACK SOHO STRAIGHT SIDE OVAL
6	CWI-10707000042	TOP TRACK CHAMPAGNE STRAIGHT SIDE OVAL
20	CWI-10347350010	LEDGE COVER 8" INNER SOHO [Q21]
4	CWI-1071507160010	TOP TRACK CORNER 15' CHAMPAGNE REFLEXION

Packaging/Shipping Materials

1	cwi-4MBT032	SEAT CAP+PLATES BOX 42X14 3/8 X 8 3/16
2	cwi-4SEP107	SEPARATOR ILL2000 45 5/8 X 14 3/4
2	BTE572110	BOX TEL REVERSIBLE 57-1/4 X 21-3/8 X 10 275C

Carton Contents

140183300420000

Pool Carton:
PRESSURE PLATES 18X33 CONTOUR (42")

	QTY	Piece Part	DESCRIPTION
	8	WBI-16549	PRESSURE PLATE CONTOUR OVAL (42" SECT)

Packaging/Shipping Materials

	2	BTE501402	BOX 50" X 14" X 2"
--	----------	------------------	---------------------------

Carton Contents

141183300420000

Pool Carton:
STRAPS CONTOUR 18X33 (42")

QTY	Piece Part	DESCRIPTION
8	WBI-22726	OVAL CHANNEL END CAP
12	WBI-16726	ON-GROUND STRAP 18' CONTOUR (52.6875")
8	WBI-16539	STRAP END CHANNEL

Packaging/Shipping Materials

2	BTE540805	BOX 54" X 8-3/4" X 5"
----------	------------------	------------------------------

Carton Contents

143183344423502

Pool Carton:
METAL UPR SILVER BRUSHED 18X33 JAVA 52"

	QTY	Piece Part	DESCRIPTION
	8	10010	WRAP UR OVAL SILVERBRUSHED 53.27 JAVA (FOR 52" TALL
	8	WBI-29917	FOAM BLOCK
	1	10522123	HARDWARE 1530 / 1833 STEEL STRUCTURE LIBERTY

Packaging/Shipping Materials

1	NLR- 1810120	TEL TOP 59X14-1/8X5 275BC
1	NLR- 1810140	TEL BTM 59X13-5/8X8-1/4 200BC

Carton Contents

145000044423500

Pool Carton:

UN CHAN & GUS SILVER BRUSHED JAVA (42") ALL SIZE 4 PCS

	QTY	Piece Part	DESCRIPTION
	4	WBI-22247	YARDMORE GUSSET LEFT BRUSHED SILVER
	4	WBI-22248	YARDMORE GUSSET RIGHT BRUSHED SILVER
	1	WBI-16720	HWARE GUSSETS 4 PACK
	4	WBI-15933	UNDER CHANNEL CONTOUR

Packaging/Shipping Materials

	2	BTE521604	BOX 52" X 16" X 4-1/2"
--	----------	------------------	-------------------------------

Carton Contents

146000044423500

Pool Carton:

UN CHAN & GUS SILVER BRUSHED JAVA (42") ALL SIZE 4 PCS

	QTY	Piece Part	DESCRIPTION
	1	WBI-16720	HWARE GUSSETS 4 PACK
	4	WBI-22248	YARDMORE GUSSET RIGHT BRUSHED SILVER
	4	WBI-22247	YARDMORE GUSSET LEFT BRUSHED SILVER
	4	WBI-15933	UNDER CHANNEL CONTOUR

Packaging/Shipping Materials

	2	BTE521604	BOX 52" X 16" X 4-1/2"
--	----------	------------------	------------------------

Carton Contents

101214347350000

Pool Carton:
TOP RAIL 2143 SOHO JAVA

QTY	Piece Part	DESCRIPTION
14	CWI-10147350000	TOP LEDGE 8" SOHO RESIN CMN CVD 56-3/4" [Q]
12	CWI-10147350042	TOP LEDGE 8" SOHO RESIN 43" [Q]

Packaging/Shipping Materials

2	BTE572416	BOX TEL REVERSIBLE 57" X 24" X 16" 275C
----------	------------------	--

Carton Contents

102214344350002

Pool Carton:
UPRIGHT 2143 SILVER BRUSHED JAVA 52"

QTY	Piece Part	DESCRIPTION
12	CWI-10247350002	UPRIGHT SILVER BRUSHED JAVA FOR 52" (51")

Packaging/Shipping Materials

1	CWI.4MBT058	BOX FOR DEMO 58 1/2 X 12 X 11 1/4
----------	--------------------	--

Carton Contents

134214347350000

Pool Carton:
RESIN KIT 2143 SOHO JAVA

QTY	Piece Part	DESCRIPTION
2	CWI-1082447000030	BOT TRACK CORNER 24' SOHO LEFT
2	CWI-1082447000020	BOT TRACK CORNER 24' SOHO RIGHT
26	CWI-11147350000	TOP PLATE SOHO [Q21]
4	CWI-1072407160010	TOP TRACK CORNER 24' CHAMPAGNE UNIVERSAL
12	CWI-10707000042	TOP TRACK CHAMPAGNE STRAIGHT SIDE OVAL
1	CWI-1052143350	HWARE 2143 LIBERTY OVAL
10	CWI-1082447000000	BOTTOM TRACK 24' SOHO TRUE SIZE
12	CWI-11247350000	FOOT COVER 8" SOHO [Q21]
1	SACWBI36875	SAC DVD D'INSTALLATION AQUALEADER
10	CWI-1072407160000	TOP TRACK 24' CHAMPAGNE UNIVERSAL
26	CWI-10347350030	LEDGE COVER 8" PLATE SOHO [Q21]
26	CWI-10347350000	LEDGE COVER 8" SOHO [Q21]
12	CWI-10847000042	BOT TRACK SOHO STRAIGHT SIDE OVAL
14	CWI-10433000000	BOTTOM CONNECTOR CONTOUR GREY
26	CWI-10347350010	LEDGE COVER 8" INNER SOHO [Q21]

Packaging/Shipping Materials

2	BTE572110	BOX TEL REVERSIBLE 57-1/4 X 21-3/8 X 10 275C
1	CWI 4MBT032	SEAT CAP+PLATES BOX 42X14 3/8 X 8 3/16
2	CWI 4SEP107	SEPARATOR ILL2000 45 5/8 X 14 3/4

Carton Contents

140214300420000

Pool Carton:
PRESSURE PLATES 21X43 CONTOUR (42")

QTY	Piece Part	DESCRIPTION
14	WBI-16549	PRESSURE PLATE CONTOUR OVAL (42" SECT)

Packaging/Shipping Materials

2	BTE501402	BOX 50" X 14" X 2"
----------	------------------	---------------------------

Carton Contents

141214300420000

Pool Carton:
STRAPS CONTOUR 21X43 (42")

QTY	Piece Part	DESCRIPTION
8	WBI-16539	STRAP END CHANNEL
8	WBI-22726	OVAL CHANNEL END CAP
16	WBI-22126	ON-GROUND STRAP CONTOUR 21' (48.984")

Packaging/Shipping Materials

2	BTE540805	BOX 54" X 8-3/4" X 5"
----------	------------------	------------------------------

Carton Contents

142214300420000

Pool Carton:
STRAPS CONTOUR 21X43 (42") CARTON 2

	QTY	Piece Part	DESCRIPTION
	6	WBI-16539	STRAP END CHANNEL
	12	WBI-22126	ON-GROUND STRAP CONTOUR 21' (48.984")
	6	WBI-22726	OVAL CHANNEL END CAP

Packaging/Shipping Materials

	2	BTE540805	BOX 54" X 8-3/4" X 5"
--	----------	------------------	------------------------------

Carton Contents

143214344423502

Pool Carton:
METAL UPR SILVER BRUSHED 21X43 JAVA 52"

	QTY	Piece Part	DESCRIPTION
	14	10010	WRAP UR OVAL SILVERBRUSHED 53.27 JAVA (FOR 52" TALL
	1	10522127	HARDWARE 2143 STEEL STRUCTURE LIBERTY
	14	WBI-29917	FOAM BLOCK

Packaging/Shipping Materials

	2	BTE541808	BOX TEL REVERSIBLE 54"X18"X08" 275C
--	----------	------------------	--

Carton Contents

144000044423500

Pool Carton:

UN CHAN & GUS SILVER BRUSHED JAVA (42") ALL SIZE 2 PCS

	QTY	Piece Part	DESCRIPTION
	2	WBI-22247	YARDMORE GUSSET LEFT BRUSHED SILVER
	1	WBI-16722	HWARE GUSSETS 2 PACK
	2	WBI-22248	YARDMORE GUSSET RIGHT BRUSHED SILVER
	2	WBI-15933	UNDER CHANNEL CONTOUR

Packaging/Shipping Materials

	2	BTE521604	BOX 52" X 16" X 4-1/2"
--	----------	------------------	------------------------

Carton Contents

145000044423500

Pool Carton:

UN CHAN & GUS SILVER BRUSHED JAVA (42") ALL SIZE 4 PCS

	QTY	Piece Part	DESCRIPTION
	4	WBI-22247	YARDMORE GUSSET LEFT BRUSHED SILVER
	4	WBI-22248	YARDMORE GUSSET RIGHT BRUSHED SILVER
	1	WBI-16720	HWARE GUSSETS 4 PACK
	4	WBI-15933	UNDER CHANNEL CONTOUR

Packaging/Shipping Materials

	2	BTE521604	BOX 52" X 16" X 4-1/2"
--	----------	------------------	-------------------------------

Carton Contents

146000044423500

Pool Carton:

UN CHAN & GUS SILVER BRUSHED JAVA (42") ALL SIZE 4 PCS

	QTY	Piece Part	DESCRIPTION
	1	WBI-16720	HWARE GUSSETS 4 PACK
	4	WBI-22248	YARDMORE GUSSET RIGHT BRUSHED SILVER
	4	WBI-22247	YARDMORE GUSSET LEFT BRUSHED SILVER
	4	WBI-15933	UNDER CHANNEL CONTOUR

Packaging/Shipping Materials

	2	BTE521604	BOX 52" X 16" X 4-1/2"
--	----------	------------------	------------------------

Carton Contents

147000044423500

Pool Carton:

UN CHAN & GUS SILVER BRUSHED JAVA (42") ALL SIZE 4 PCS

	QTY	Piece Part	DESCRIPTION
	1	WBI-16720	HWARE GUSSETS 4 PACK
	4	WBI-15933	UNDER CHANNEL CONTOUR
	4	WBI-22248	YARDMORE GUSSET RIGHT BRUSHED SILVER
	4	WBI-22247	YARDMORE GUSSET LEFT BRUSHED SILVER

Packaging/Shipping Materials

	2	BTE521604	BOX 52" X 16" X 4-1/2"
--	----------	------------------	-------------------------------

Carton Contents

101001247350000

Pool Carton:
TOP RAIL 12' SOHO JAVA

	QTY	Piece Part	DESCRIPTION
	8	CWI-10147350000	TOP LEDGE 8" SOHO RESIN CMN CVD 56-3/4" [Q]

Packaging/Shipping Materials

	2	BTE572110	BOX TEL REVERSIBLE 57-1/4 X 21-3/8 X 10 275C
--	----------	------------------	---

Carton Contents

102001244350002

Pool Carton:
UPRIGHT 12' SILVER BRUSHED JAVA 52"

	QTY	Piece Part	DESCRIPTION
	8	CWI-10247350002	UPRIGHT SILVER BRUSHED JAVA FOR 52" (51")

Packaging/Shipping Materials

	1	CWI.4MBT058	BOX FOR DEMO 58 1/2 X 12 X 11 1/4
--	----------	--------------------	--

Carton Contents

134001247350000

Pool Carton:
RESIN KIT 12' SOHO JAVA

QTY	Piece Part	DESCRIPTION
1	SACWBI36875	SAC DVD D'INSTALLATION AQUALEADER
8	CWI-11247350000	FOOT COVER 8" SOHO [Q21]
8	CWI-11147350000	TOP PLATE SOHO [Q21]
8	CWI-10347350010	LEDGE COVER 8" INNER SOHO [Q21]
8	CWI-1071507160000	TOP TRACK 15' CHAMPAGNE UNIVERSAL
8	CWI-10347350000	LEDGE COVER 8" SOHO [Q21]
8	CWI-10347350030	LEDGE COVER 8" PLATE SOHO [Q21]
1	CWI-1051200350	HWARE 12' LIBERTY
8	CWI-1081547000000	BOTTOM TRACK 15' SOHO TRUE SIZE

Packaging/Shipping Materials

2	BTE572110	BOX TEL REVERSIBLE 57-1/4 X 21-3/8 X 10 275C
1	CWI-4MBT032	SEAT CAP+PLATES BOX 42X14 3/8 X 8 3/16

Carton Contents

101001547350000

Pool Carton:
TOP RAIL 15' SOHO JAVA

QTY	Piece Part	DESCRIPTION
10	CWI-10147350000	TOP LEDGE 8" SOHO RESIN CMN CVD 56-3/4" [Q]

Packaging/Shipping Materials

2	BTE572110	BOX TEL REVERSIBLE 57-1/4 X 21-3/8 X 10 275C
----------	------------------	---

Carton Contents

102001544350002

Pool Carton:
UPRIGHT 15' SILVER BRUSHED JAVA 52"

	QTY	Piece Part	DESCRIPTION
	10	CWI-10247350002	UPRIGHT SILVER BRUSHED JAVA FOR 52" (51")

Packaging/Shipping Materials

1	CWI.4MBT058	BOX FOR DEMO 58 1/2 X 12 X 11 1/4
----------	--------------------	--

Carton Contents

134001547350000

Pool Carton:
RESIN KIT 15' SOHO JAVA

QTY	Piece Part	DESCRIPTION
10	CWI-10347350010	LEDGE COVER 8" INNER SOHO [Q21]
10	CWI-1071507160000	TOP TRACK 15' CHAMPAGNE UNIVERSAL
1	CWI-1051500350	HWARE 15' LIBERTY
10	CWI-1081547000000	BOTTOM TRACK 15' SOHO TRUE SIZE
10	CWI-10347350030	LEDGE COVER 8" PLATE SOHO [Q21]
10	CWI-10347350000	LEDGE COVER 8" SOHO [Q21]
1	SACWBI36875	SAC DVD D`INSTALLATION AQUALEADER
10	CWI-11247350000	FOOT COVER 8" SOHO [Q21]
10	CWI-11147350000	TOP PLATE SOHO [Q21]

Packaging/Shipping Materials

2	BTE572110	BOX TEL REVERSIBLE 57-1/4 X 21-3/8 X 10 275C
1	CWI-4MBT032	SEAT CAP+PLATES BOX 42X14 3/8 X 8 3/16

Carton Contents

101001847350000

Pool Carton:
TOP RAIL 18' SOHO JAVA

QTY	Piece Part	DESCRIPTION
12	CWI-10147350000	TOP LEDGE 8" SOHO RESIN CMN CVD 56-3/4" [Q]

Packaging/Shipping Materials

2	BTE572110	BOX TEL REVERSIBLE 57-1/4 X 21-3/8 X 10 275C
----------	------------------	---

Carton Contents

102001844350002

Pool Carton:
UPRIGHT 18' SILVER BRUSHED JAVA 52"

QTY	Piece Part	DESCRIPTION
12	CWI-10247350002	UPRIGHT SILVER BRUSHED JAVA FOR 52" (51")

Packaging/Shipping Materials

1	CWI.4MBT058	BOX FOR DEMO 58 1/2 X 12 X 11 1/4
----------	--------------------	--

Carton Contents

134001847350000

Pool Carton:
RESIN KIT 18' SOHO JAVA

QTY	Piece Part	DESCRIPTION
12	CWI-1082447000000	BOTTOM TRACK 24' SOHO TRUE SIZE
12	CWI-10347350010	LEDGE COVER 8" INNER SOHO [Q21]
12	CWI-11247350000	FOOT COVER 8" SOHO [Q21]
12	CWI-11147350000	TOP PLATE SOHO [Q21]
12	CWI-10347350000	LEDGE COVER 8" SOHO [Q21]
12	CWI-1072407160000	TOP TRACK 24' CHAMPAGNE UNIVERSAL
1	SACWBI36875	SAC DVD D'INSTALLATION AQUALEADER
1	CWI-1051800350	HWARE 18' LIBERTY
12	CWI-10347350030	LEDGE COVER 8" PLATE SOHO [Q21]

Packaging/Shipping Materials

2	BTE572110	BOX TEL REVERSIBLE 57-1/4 X 21-3/8 X 10 275C
1	CWI-4MBT032	SEAT CAP+PLATES BOX 42X14 3/8 X 8 3/16

Carton Contents

101002147350000

Pool Carton:
TOP RAIL 21' SOHO JAVA

QTY	Piece Part	DESCRIPTION
14	CWI-10147350000	TOP LEDGE 8" SOHO RESIN CMN CVD 56-3/4" [Q]

Packaging/Shipping Materials

2	BTE572110	BOX TEL REVERSIBLE 57-1/4 X 21-3/8 X 10 275C
----------	------------------	---

Carton Contents

102002144350002

Pool Carton:
UPRIGHT 21' SILVER BRUSHED JAVA 52"

QTY	Piece Part	DESCRIPTION
14	CWI-10247350002	UPRIGHT SILVER BRUSHED JAVA FOR 52" (51")

Packaging/Shipping Materials

1	CWI.4MBT058	BOX FOR DEMO 58 1/2 X 12 X 11 1/4
----------	--------------------	--

Carton Contents

134002147350000

Pool Carton:
RESIN KIT 21' SOHO JAVA

QTY	Piece Part	DESCRIPTION
1	SACWBI36875	SAC DVD D'INSTALLATION AQUALEADER
14	CWI-11147350000	TOP PLATE SOHO [Q21]
14	CWI-1072407160000	TOP TRACK 24' CHAMPAGNE UNIVERSAL
14	CWI-10347350030	LEDGE COVER 8" PLATE SOHO [Q21]
14	CWI-1082447000000	BOTTOM TRACK 24' SOHO TRUE SIZE
14	CWI-10347350000	LEDGE COVER 8" SOHO [Q21]
14	CWI-11247350000	FOOT COVER 8" SOHO [Q21]
14	CWI-10347350010	LEDGE COVER 8" INNER SOHO [Q21]
1	CWI-1052100350	HWARE 21' LIBERTY

Packaging/Shipping Materials

2	BTE572110	BOX TEL REVERSIBLE 57-1/4 X 21-3/8 X 10 275C
1	CWI- 4MBT032	SEAT CAP+PLATES BOX 42X14 3/8 X 8 3/16

Carton Contents

101002447350000

Pool Carton:
TOP RAIL 24' SOHO JAVA

QTY	Piece Part	DESCRIPTION
16	CWI-10147350000	TOP LEDGE 8" SOHO RESIN CMN CVD 56-3/4" [Q]

Packaging/Shipping Materials

2	cwi-4SEP107	SEPARATOR ILL2000 45 5/8 X 14 3/4
2	BTE572110	BOX TEL REVERSIBLE 57-1/4 X 21-3/8 X 10 275C

Carton Contents

102002444350002

Pool Carton:
UPRIGHT 24' SILVER BRUSHED JAVA 52"

QTY	Piece Part	DESCRIPTION
16	CWI-10247350002	UPRIGHT SILVER BRUSHED JAVA FOR 52" (51")

Packaging/Shipping Materials

1	CWI.4MBT058	BOX FOR DEMO 58 1/2 X 12 X 11 1/4
----------	--------------------	--

Carton Contents

134002447350000

Pool Carton:
RESIN KIT 24' SOHO JAVA

QTY	Piece Part	DESCRIPTION
1	SACWBI36875	SAC DVD D'INSTALLATION AQUALEADER
16	CWI-1082447000000	BOTTOM TRACK 24' SOHO TRUE SIZE
16	CWI-10347350030	LEDGE COVER 8" PLATE SOHO [Q21]
1	CWI-1052400350	HWARE 24' LIBERTY
16	CWI-11147350000	TOP PLATE SOHO [Q21]
16	CWI-1072407160000	TOP TRACK 24' CHAMPAGNE UNIVERSAL
16	CWI-11247350000	FOOT COVER 8" SOHO [Q21]
16	CWI-10347350010	LEDGE COVER 8" INNER SOHO [Q21]
16	CWI-10347350000	LEDGE COVER 8" SOHO [Q21]

Packaging/Shipping Materials

1	CWI.4MBT032	SEAT CAP+PLATES BOX 42X14 3/8 X 8 3/16
2	BTE572110	BOX TEL REVERSIBLE 57-1/4 X 21-3/8 X 10 275C

Carton Contents

101002747350000

Pool Carton:
TOP RAIL 27' SOHO JAVA

QTY	Piece Part	DESCRIPTION
18	CWI-10147350000	TOP LEDGE 8" SOHO RESIN CMN CVD 56-3/4" [Q]

Packaging/Shipping Materials

2	BTE572110	BOX TEL REVERSIBLE 57-1/4 X 21-3/8 X 10 275C
2	cwi-4SEP107	SEPARATOR ILL2000 45 5/8 X 14 3/4

Carton Contents

102002744350002

Pool Carton:
UPRIGHT 27' SILVER BRUSHED JAVA 52"

	QTY	Piece Part	DESCRIPTION
	18	CWI-10247350002	UPRIGHT SILVER BRUSHED JAVA FOR 52" (51")

Packaging/Shipping Materials

	1	CWI.4MBT058	BOX FOR DEMO 58 1/2 X 12 X 11 1/4
--	----------	--------------------	--

Carton Contents

134002747350000

Pool Carton:
RESIN KIT 27' SOHO JAVA

QTY	Piece Part	DESCRIPTION
18	CWI-1073007160000	TOP TRACK 30' CHAMPAGNE UNIVERSAL
18	CWI-10347350000	LEDGE COVER 8" SOHO [Q21]
1	SACWBI36875	SAC DVD D'INSTALLATION AQUALEADER
18	CWI-10347350010	LEDGE COVER 8" INNER SOHO [Q21]
18	CWI-10347350030	LEDGE COVER 8" PLATE SOHO [Q21]
1	CWI-1052700350	HWARE 27' LIBERTY
18	CWI-11247350000	FOOT COVER 8" SOHO [Q21]
18	CWI-11147350000	TOP PLATE SOHO [Q21]
18	CWI-1083047000000	BOTTOM TRACK 30' SOHO TRUE SIZE

Packaging/Shipping Materials

2	BTE572110	BOX TEL REVERSIBLE 57-1/4 X 21-3/8 X 10 275C
2	cwi- 4SEP107	SEPARATOR ILL2000 45 5/8 X 14 3/4
1	cwi- 4MBT032	SEAT CAP+PLATES BOX 42X14 3/8 X 8 3/16

Carton Contents

101003047350000

Pool Carton:
TOP RAIL 30' SOHO JAVA

QTY	Piece Part	DESCRIPTION
20	CWI-10147350000	TOP LEDGE 8" SOHO RESIN CMN CVD 56-3/4" [Q]

Packaging/Shipping Materials

2	BTE572110	BOX TEL REVERSIBLE 57-1/4 X 21-3/8 X 10 275C
2	cwi-4SEP107	SEPARATOR ILL2000 45 5/8 X 14 3/4

Carton Contents

102003044350002

Pool Carton:
UPRIGHT 30' SILVER BRUSHED JAVA 52"

QTY	Piece Part	DESCRIPTION
20	CWI-10247350002	UPRIGHT SILVER BRUSHED JAVA FOR 52" (51")

Packaging/Shipping Materials

1	CWI.4MBT058	BOX FOR DEMO 58 1/2 X 12 X 11 1/4
----------	--------------------	--

Carton Contents

134003047350000

Pool Carton:
RESIN KIT 30' SOHO JAVA

QTY	Piece Part	DESCRIPTION
1	SACWBI36875	SAC DVD D'INSTALLATION AQUALEADER
20	CWI-10347350030	LEDGE COVER 8" PLATE SOHO [Q21]
20	CWI-10347350000	LEDGE COVER 8" SOHO [Q21]
1	CWI-1053000350	HWARE 30' LIBERTY
20	CWI-11147350000	TOP PLATE SOHO [Q21]
20	CWI-1083047000000	BOTTOM TRACK 30' SOHO TRUE SIZE
20	CWI-1073007160000	TOP TRACK 30' CHAMPAGNE UNIVERSAL
20	CWI-10347350010	LEDGE COVER 8" INNER SOHO [Q21]
20	CWI-11247350000	FOOT COVER 8" SOHO [Q21]

Packaging/Shipping Materials

2	BTE572110	BOX TEL REVERSIBLE 57-1/4 X 21-3/8 X 10 275C
2	cwi- 4SEP107	SEPARATOR ILL2000 45 5/8 X 14 3/4

Carton Contents

101122447350000

Pool Carton:
TOP RAIL 1224 SOHO JAVA

	QTY	Piece Part	DESCRIPTION
	4	CWI-10147350042	TOP LEDGE 8" SOHO RESIN 43" [Q]
	10	CWI-10147350000	TOP LEDGE 8" SOHO RESIN CMN CVD 56-3/4" [Q]

Packaging/Shipping Materials

2	BTE572110	BOX TEL REVERSIBLE 57-1/4 X 21-3/8 X 10 275C
----------	------------------	---

Carton Contents

102122444350002

Pool Carton:
UPRIGHT 1224 SILVER BRUSHED JAVA 52"

	QTY	Piece Part	DESCRIPTION
	8	CWI-10247350002	UPRIGHT SILVER BRUSHED JAVA FOR 52" (51")

Packaging/Shipping Materials

	1	CWI.4MBT058	BOX FOR DEMO 58 1/2 X 12 X 11 1/4
--	----------	--------------------	--

Carton Contents

134122447350000

Pool Carton:
 RESIN KIT 1224 SOHO JAVA

QTY	Piece Part	DESCRIPTION
1	CWI-1051224350	HWARE 1224 LIBERTY OVAL
14	CWI-10347350000	LEDGE COVER 8" SOHO [Q21]
1	SACWBI36875	SAC DVD D`INSTALLATION AQUALEADER
2	CWI-1081547000030	BOT TRACK CORNER 15' SOHO LEFT
4	CWI-10707000042	TOP TRACK CHAMPAGNE STRAIGHT SIDE OVAL
14	CWI-10347350030	LEDGE COVER 8" PLATE SOHO [Q21]
4	CWI-1071507160010	TOP TRACK CORNER 15' CHAMPAGNE REFLEXION
6	CWI-1071507160000	TOP TRACK 15' CHAMPAGNE UNIVERSAL
6	CWI-10433000000	BOTTOM CONNECTOR CONTOUR GREY
6	CWI-1081547000000	BOTTOM TRACK 15' SOHO TRUE SIZE
4	CWI-10847000042	BOT TRACK SOHO STRAIGHT SIDE OVAL
14	CWI-10347350010	LEDGE COVER 8" INNER SOHO [Q21]
14	CWI-11147350000	TOP PLATE SOHO [Q21]
8	CWI-11247350000	FOOT COVER 8" SOHO [Q21]
2	CWI-1081547000020	BOT TRACK CORNER 15' SOHO RIGHT

Packaging/Shipping Materials

1	cwi.4MBT032	SEAT CAP+PLATES BOX 42X14 3/8 X 8 3/16
2	BTE572110	BOX TEL REVERSIBLE 57-1/4 X 21-3/8 X 10 275C

Carton Contents

140122400420000

Pool Carton:
PRESSURE PLATES 12X24 CONTOUR (42")

	QTY	Piece Part	DESCRIPTION
	6	WBI-16549	PRESSURE PLATE CONTOUR OVAL (42" SECT)

Packaging/Shipping Materials

	2	BTE501402	BOX 50" X 14" X 2"
--	----------	------------------	---------------------------

Carton Contents

141122400420000

Pool Carton:
STRAPS CONTOUR 12X24 (42")

QTY	Piece Part	DESCRIPTION
6	WBI-22726	OVAL CHANNEL END CAP
6	WBI-16539	STRAP END CHANNEL
6	WBI-16724	ON-GROUND STRAP 12' CONTOUR (41.6875")

Packaging/Shipping Materials

2	BTE540805	BOX 54" X 8-3/4" X 5"
----------	------------------	------------------------------

Carton Contents

143122444423502

Pool Carton:
METAL UPR SILVER BRUSHED 12X24 JAVA 52" (42")

	QTY	Piece Part	DESCRIPTION
	6	WBI-29917	FOAM BLOCK
	6	10010	WRAP UR OVAL SILVERBRUSHED 53.27 JAVA (FOR 52" TALL
	1	10522124	HARDWARE 1224 / 1526 STEEL STRUCTURE LIBERTY

Packaging/Shipping Materials

1	NLR- 1810131	TEL BTM 59X14-1/8X5 275BC
1	NLR- 1810120	TEL TOP 59X14-1/8X5 275BC

Carton Contents

144000044423500

Pool Carton:

UN CHAN & GUS SILVER BRUSHED JAVA (42") ALL SIZE 2 PCS

	QTY	Piece Part	DESCRIPTION
	2	WBI-22247	YARDMORE GUSSET LEFT BRUSHED SILVER
	1	WBI-16722	HWARE GUSSETS 2 PACK
	2	WBI-22248	YARDMORE GUSSET RIGHT BRUSHED SILVER
	2	WBI-15933	UNDER CHANNEL CONTOUR

Packaging/Shipping Materials

	2	BTE521604	BOX 52" X 16" X 4-1/2"
--	----------	------------------	------------------------

Carton Contents

145000044423500

Pool Carton:

UN CHAN & GUS SILVER BRUSHED JAVA (42") ALL SIZE 4 PCS

	QTY	Piece Part	DESCRIPTION
	4	WBI-22247	YARDMORE GUSSET LEFT BRUSHED SILVER
	4	WBI-22248	YARDMORE GUSSET RIGHT BRUSHED SILVER
	1	WBI-16720	HWARE GUSSETS 4 PACK
	4	WBI-15933	UNDER CHANNEL CONTOUR

Packaging/Shipping Materials

	2	BTE521604	BOX 52" X 16" X 4-1/2"
--	----------	------------------	-------------------------------